

This map was prepared for Assessment & Taxation purposes only and was NOT prepared nor is it suitable for legal, engineering or surveying purposes.

# SE1/4 NE1/4 SEC 16 T5NR28E WM UMATILLA COUNTY

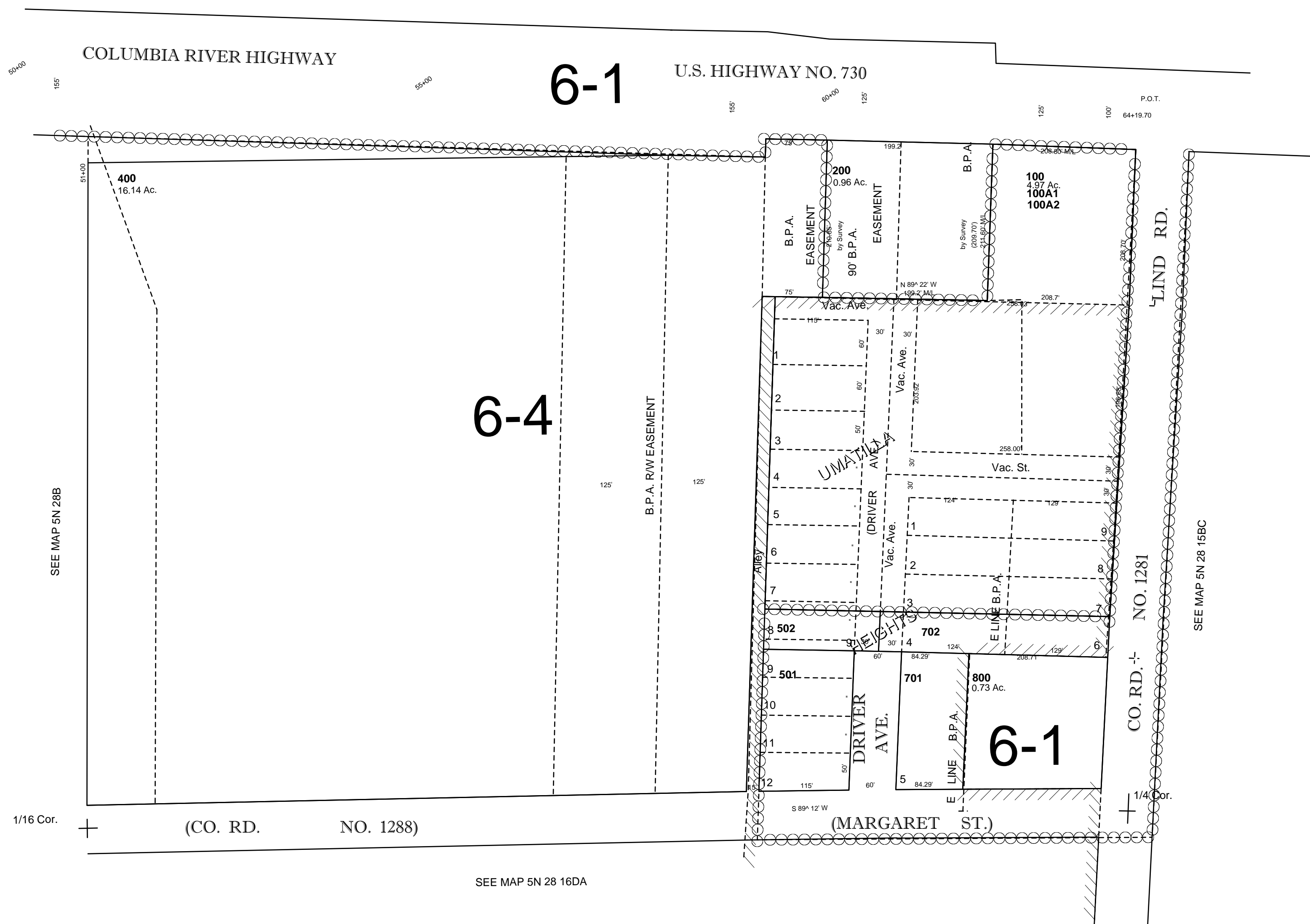
SCALE 1"=100'

## 5N2816AD

UMATILLA HEIGHTS  
BLKS 1-3  
Aerial Photo No. NZ-1P-58

CANCELLED  
300  
500  
700  
600

SEE MAP 5N 28 16AA



Revised: 7/12/11

## 5N2816AD