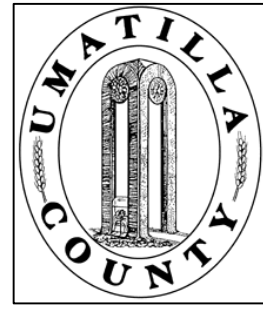


This map was prepared for Assessment & Taxation purposes only and was NOT prepared nor is it suitable for legal, engineering or surveying purposes.

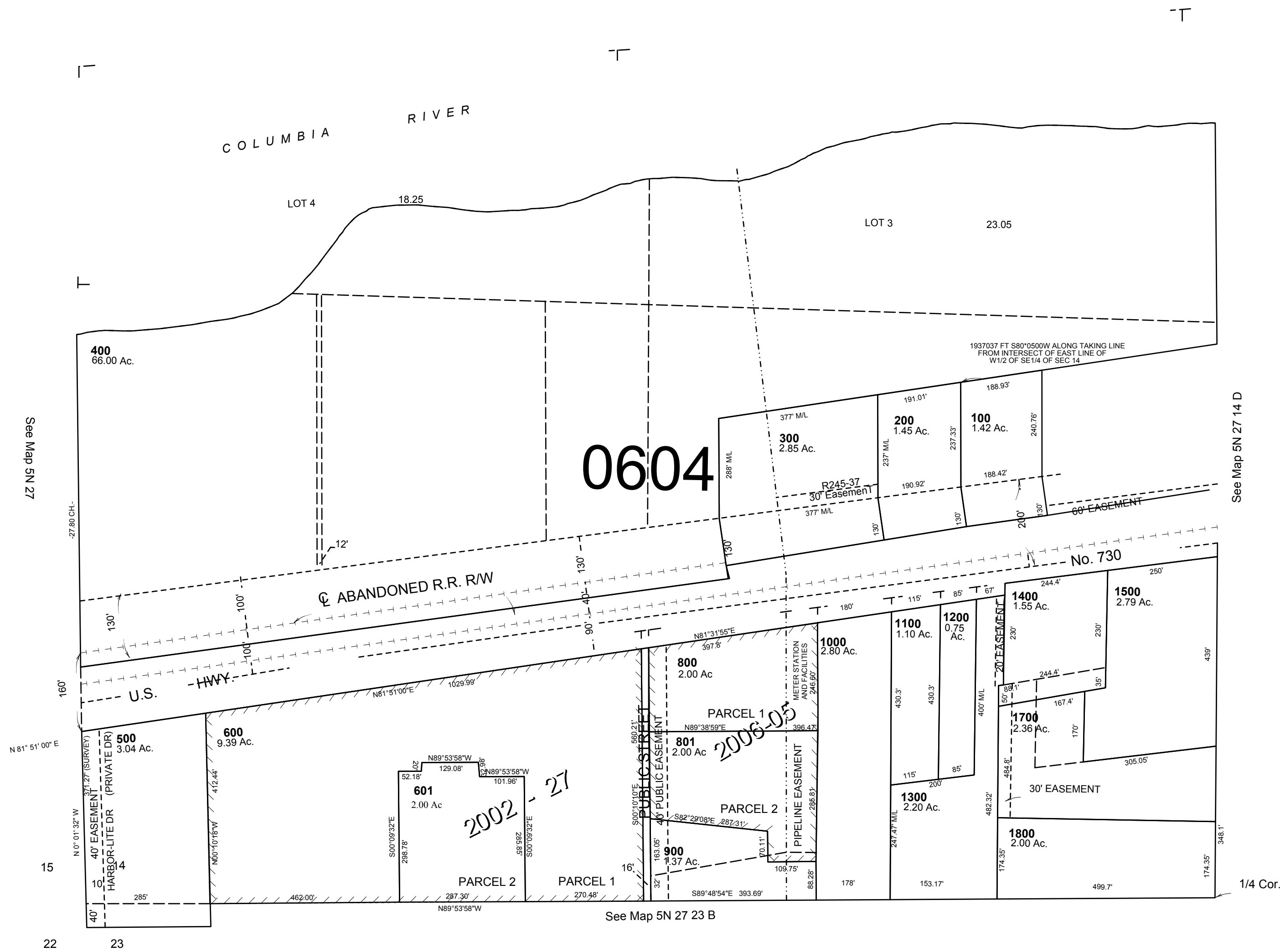


SW1/4 SEC 14 T5N R27E WM

UMATILLA COUNTY

SCALE: 1" = 200

5N2714C



Cancelled No  
700  
1600

Revised: 02-26-18

5N2714C