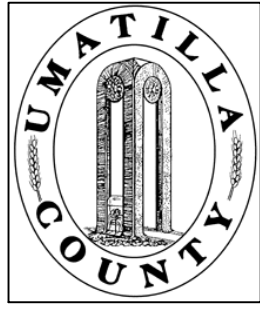


This map was prepared for Assessment & Taxation purposes only and was NOT prepared nor is it suitable for legal, engineering or surveying purposes.

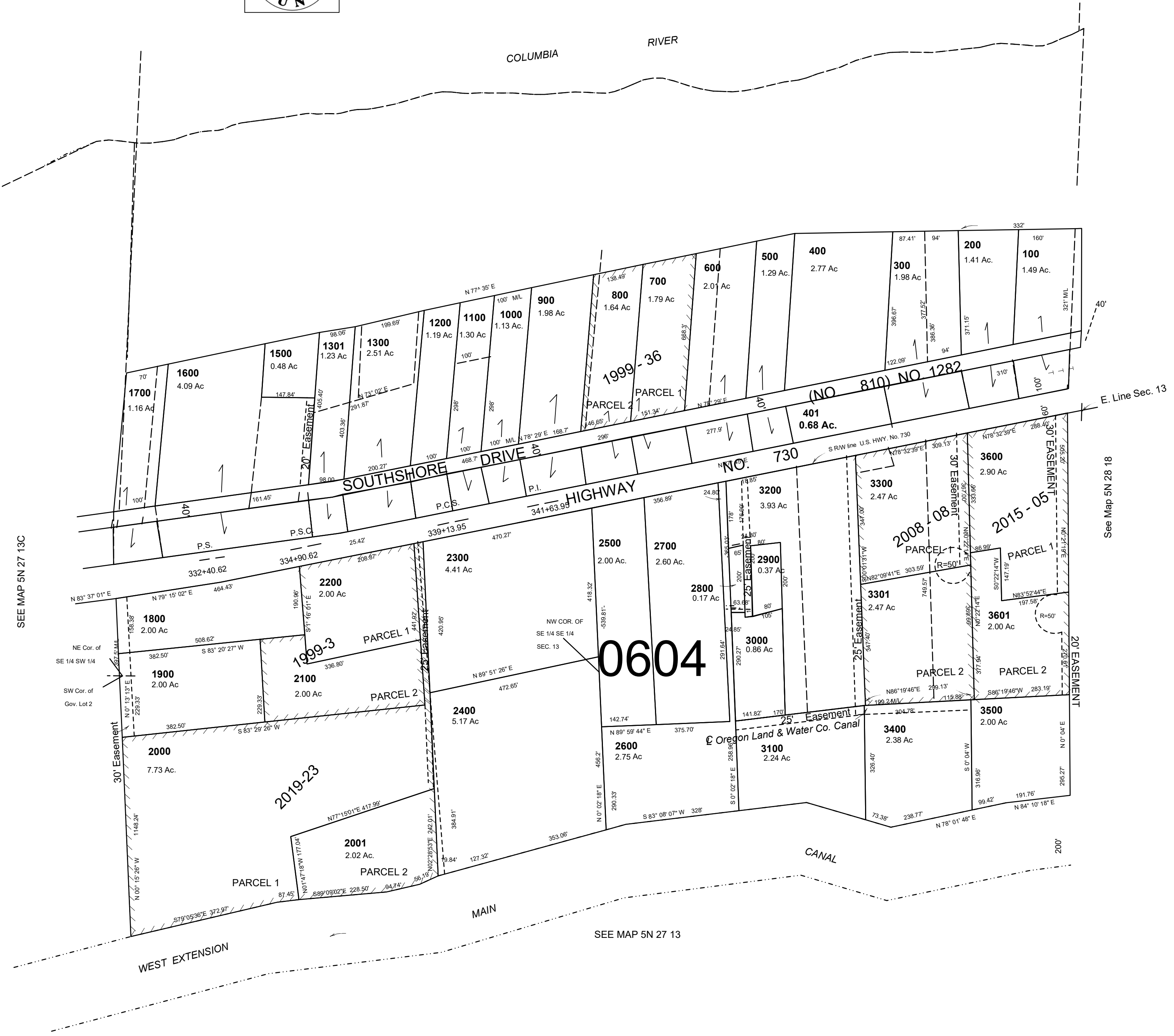


SE1/4 SEC 13 T 5N R 27 E WM
UMATILLA COUNTY

SCALE: 1" = 200'

5N2713D

Aerial Photo 1P-54



SEE MAP 5N 27 13C

SEE MAP 5N 27 13

See Map 5N 28 18

Revised: 005-17-2021

5N2713D