

This map was prepared for Assessment & Taxation purposes only and was NOT prepared nor is it suitable for legal, engineering or surveying purposes.

Cancelled Tax Lots

100
101
605

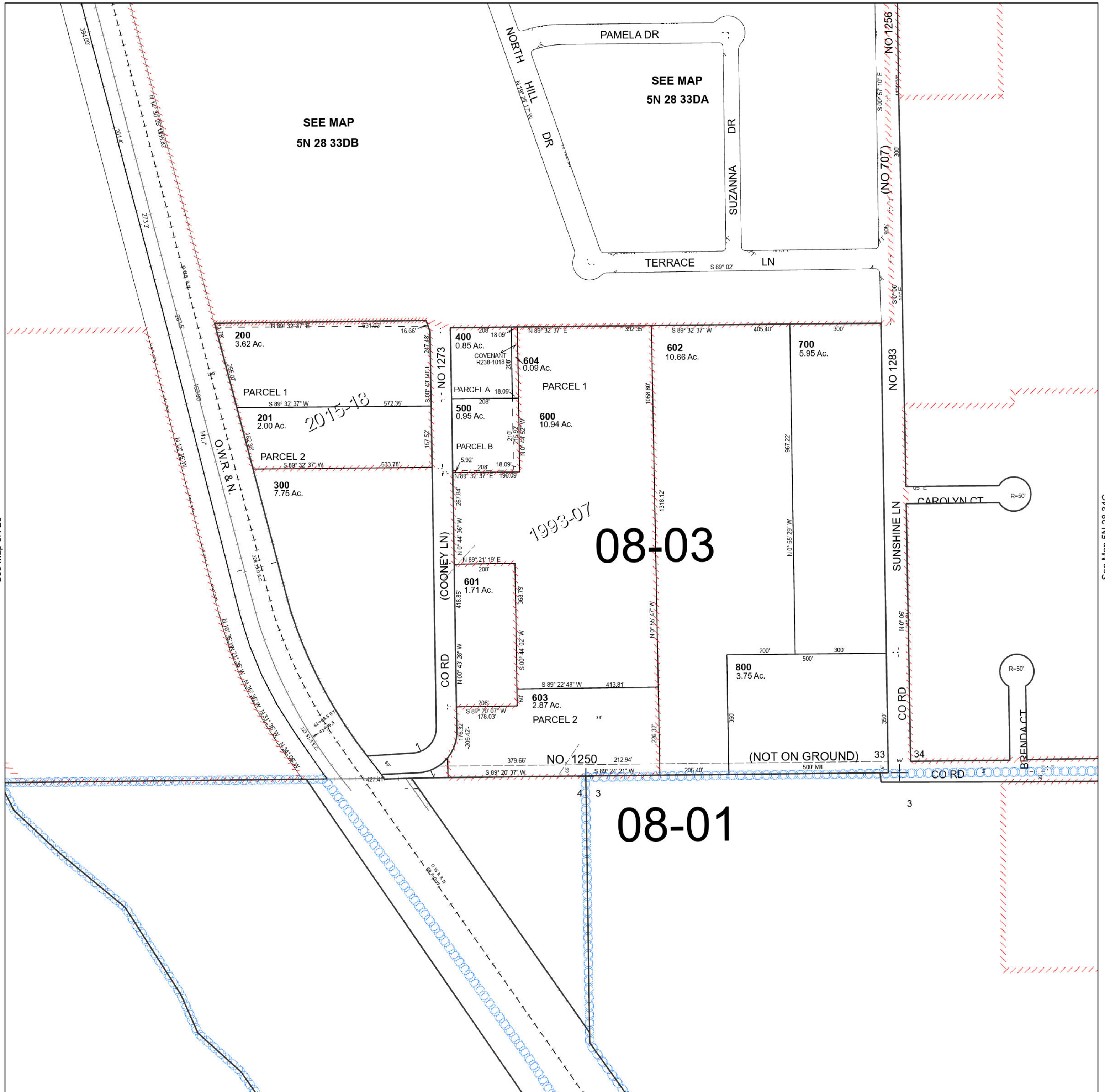
SE 1/4 SEC 33 T5N R28E WM UMATILLA COUNTY

5N 28 33D

Hermiston

SCALE 1" = 200'

See Map 5N 28 33DA



See Map 5N 28

See Map 5N 28 34C

Revised 12/27/2023

See Map 4N 28 04A

5N 28 33D