

This map was prepared for Assessment & Taxation purposes only and was NOT prepared nor is it suitable for legal, engineering or surveying purposes.

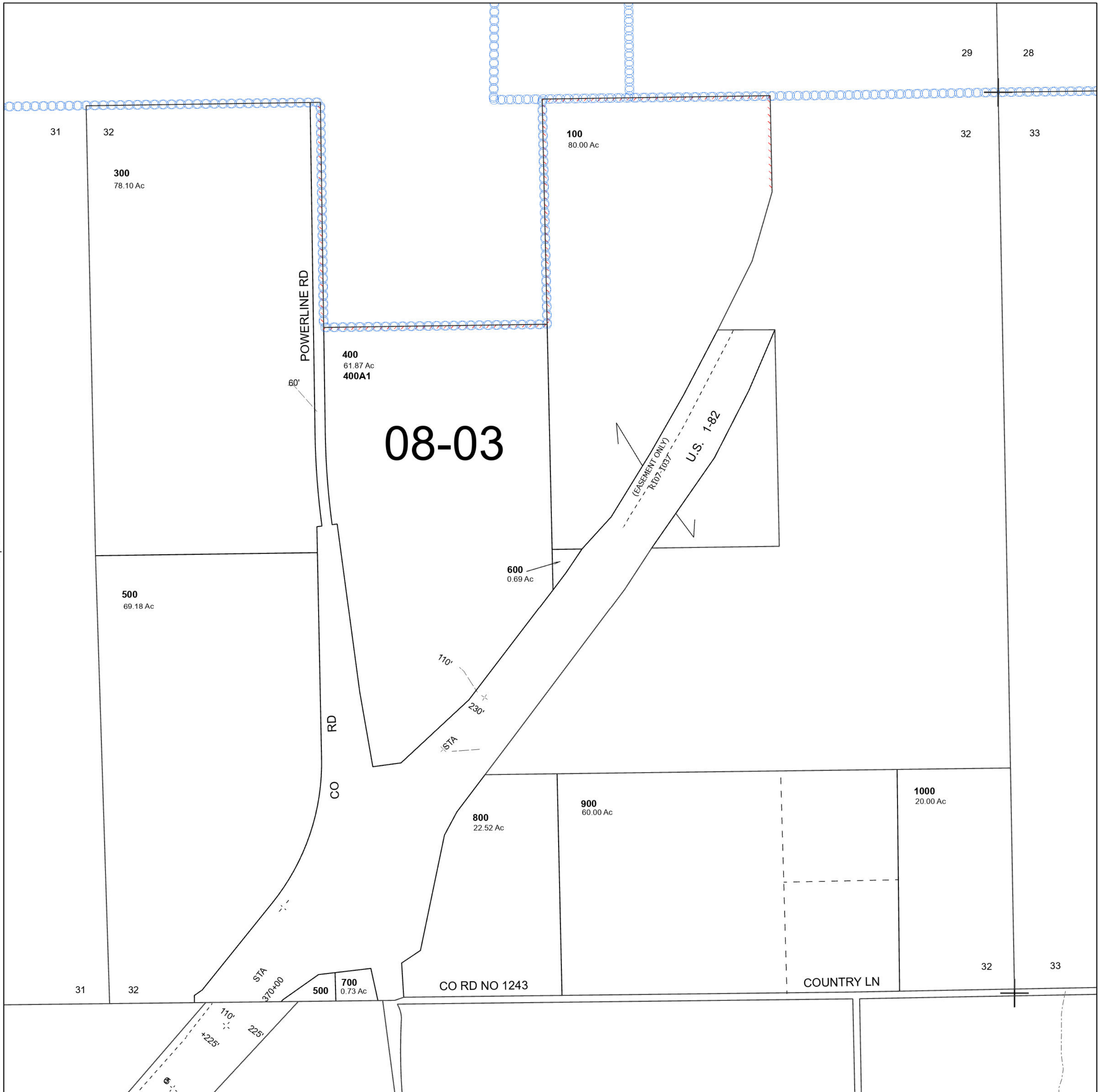
Cancelled Tax Lots
200

SEC 32 T5N R28E WM UMATILLA COUNTY

5N 28 32

SCALE 1" = 400'

See Map 5N 28



See Map 5N 28

See Map 5N 28 33

Revised 10/13/2023

See Map 4N 28 05

5N 28 32