

This map was prepared for Assessment & Taxation purposes only and was NOT prepared nor is it suitable for legal, engineering or surveying purposes.

# SEC 18 T5N R28E WM UMATILLA COUNTY

## 5N 28 18

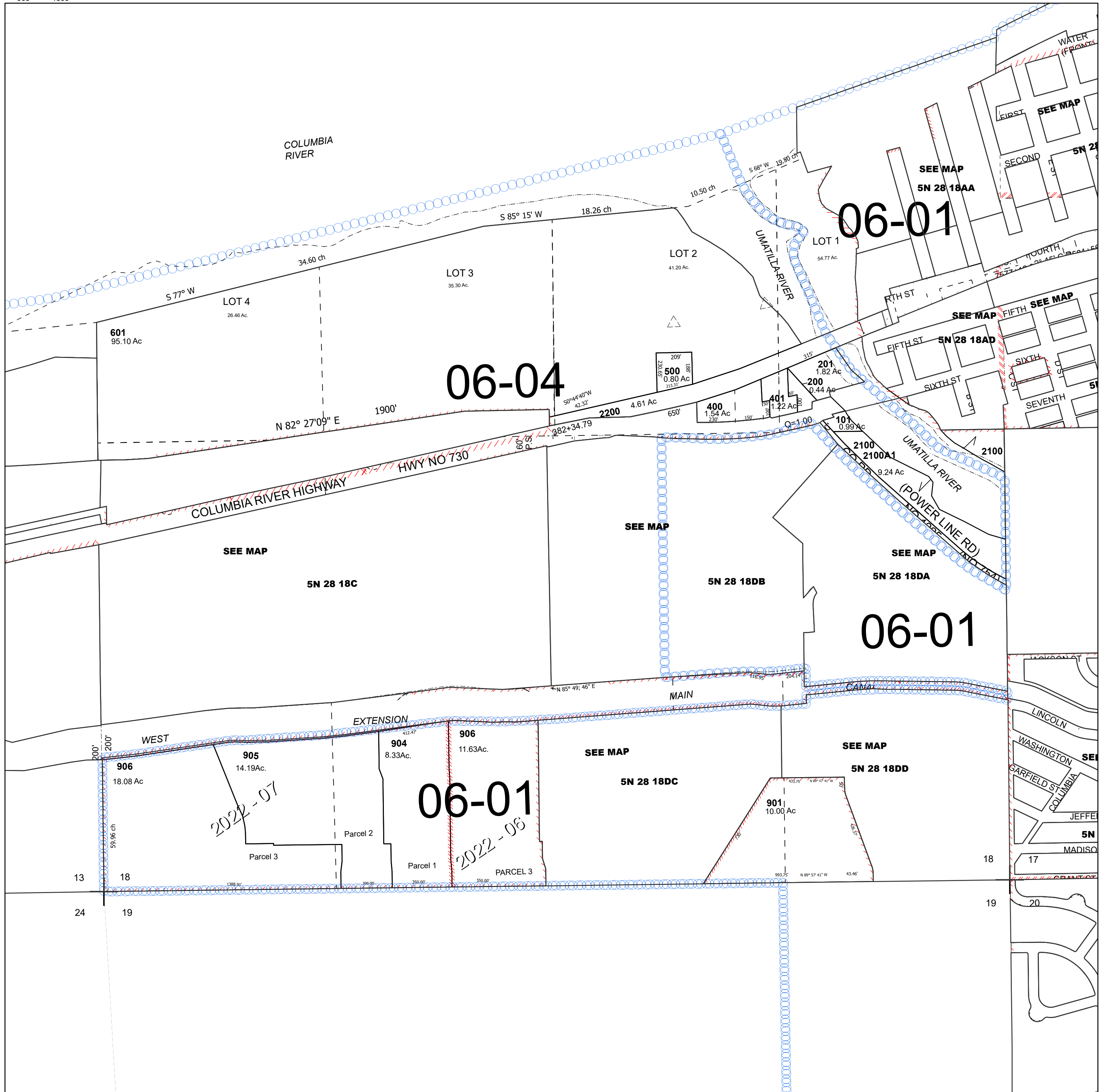
Umatilla

### Cancelled Tax Lots

100	1000	1900-1903
300	1100	2000-2009
600	1200	2101
602-607	1300	
700	1400	
800	1501-1509	
801	1600	
900	1601	
902	1700	
903	1800	

SCALE 1" =400'

See Map



See Map 5N 27 13D

See Map 5N 28 17