

This map was prepared for Assessment & Taxation purposes only and was NOT prepared nor is it suitable for legal, engineering or surveying purposes.

Cancelled Tax Lots

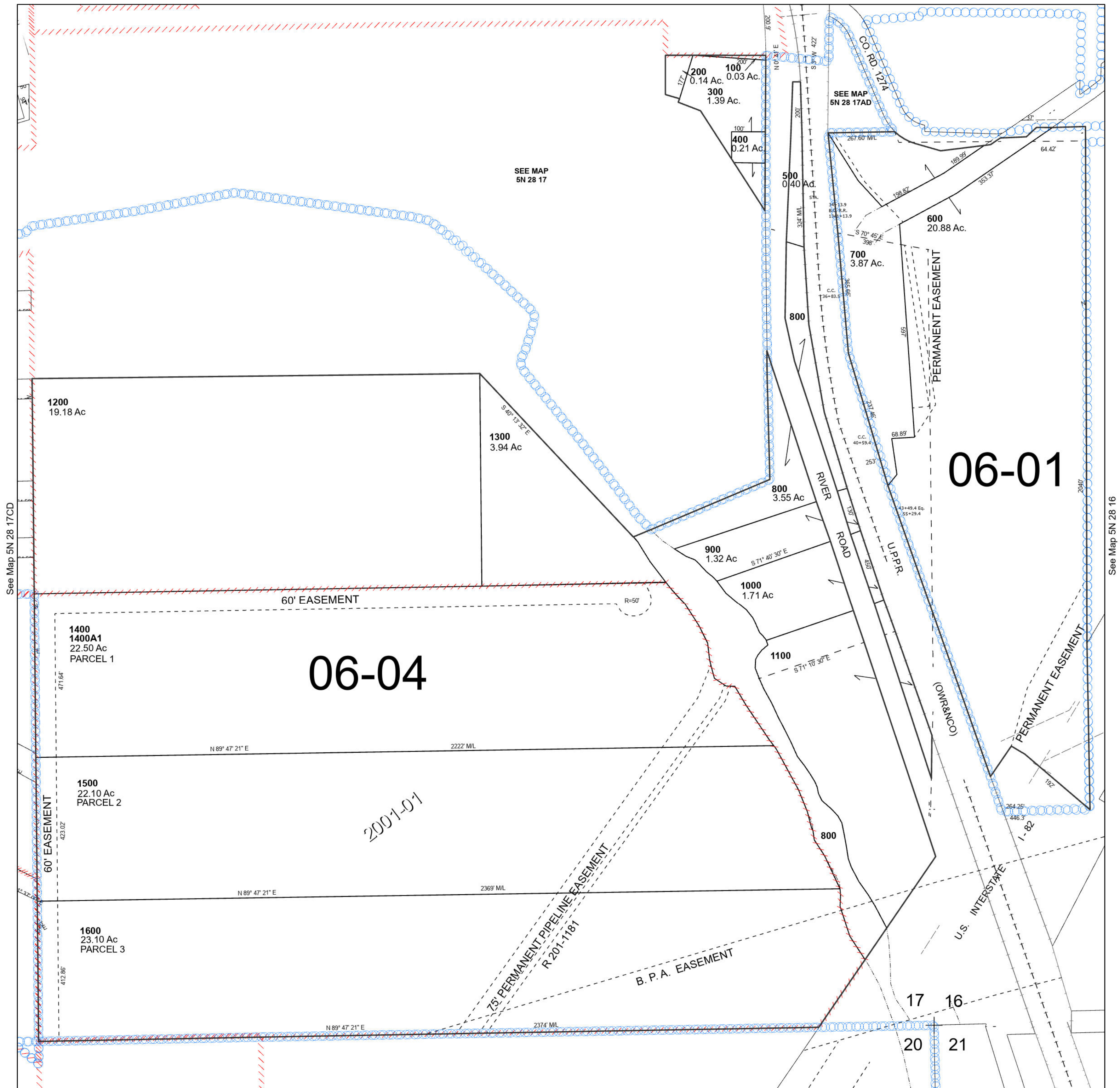
# SE 1/4 SEC 17 T5N R28E WM UMATILLA COUNTY

## 5N 28 17D

Umatilla

SCALE 1" = 200'

See Map 5N 28 17AD



See Map 5N 28 17CD

See Map 5N 28 16

Revised 3/29/2024

See Map 5N 28 20

## 5N 28 17D