

This map was prepared for Assessment & Taxation purposes only and was NOT prepared nor is it suitable for legal, engineering or surveying purposes.

NE 1/4 SW 1/4 SEC 17 T5N R28E WM UMATILLA COUNTY

Umatilla

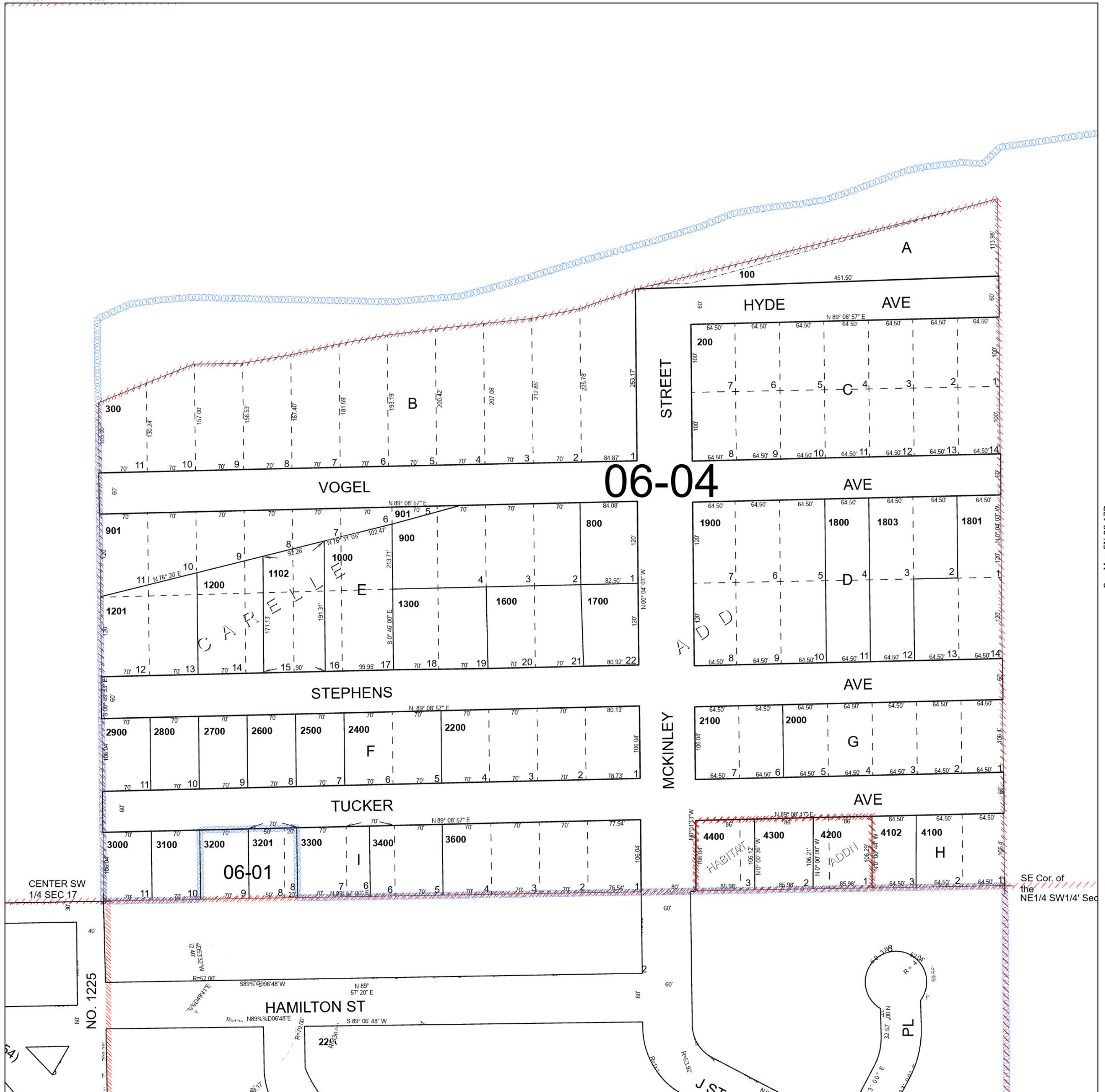
SCALE 1" = 100'

5N 28 17CA

Cancelled Tax Lots

400	1401	3900
500	1500	4000
600	1802	4101
700	2300	
1001	3201	
1002	3202	
1100	3401	
1101	3500	
1202-1204	3700	
1400	3800	

See Map 5N 28 17



See Map 5N 28 17

See Map 5N 28 17D

Revised 11/6/2023

See Map 5N 28 17CD

5N 28 17CA