

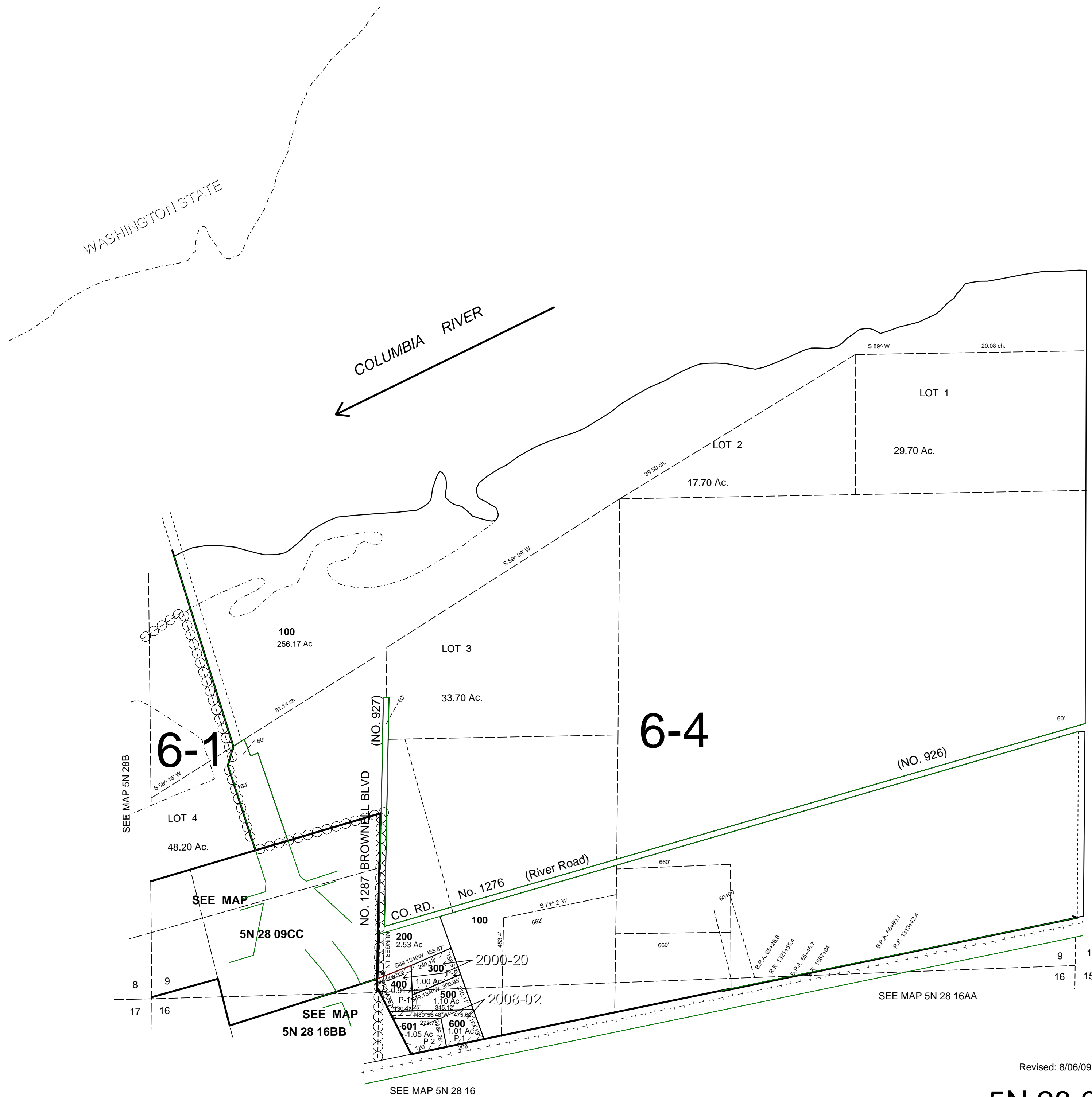
This map was prepared for Assessment & Taxation purposes only and was NOT prepared nor is it suitable for legal, engineering or surveying purposes.

# SEC 9 T5N R28E WM UMATILLA COUNTY

SCALE 1"=400'

## 5N 28 09

AERIAL PHOTO NO. 1P 56-58



Revised: 8/06/09

## 5N 28 09