

THIS MAP WAS PREPARED FOR ASSESSMENT PURPOSES ONLY

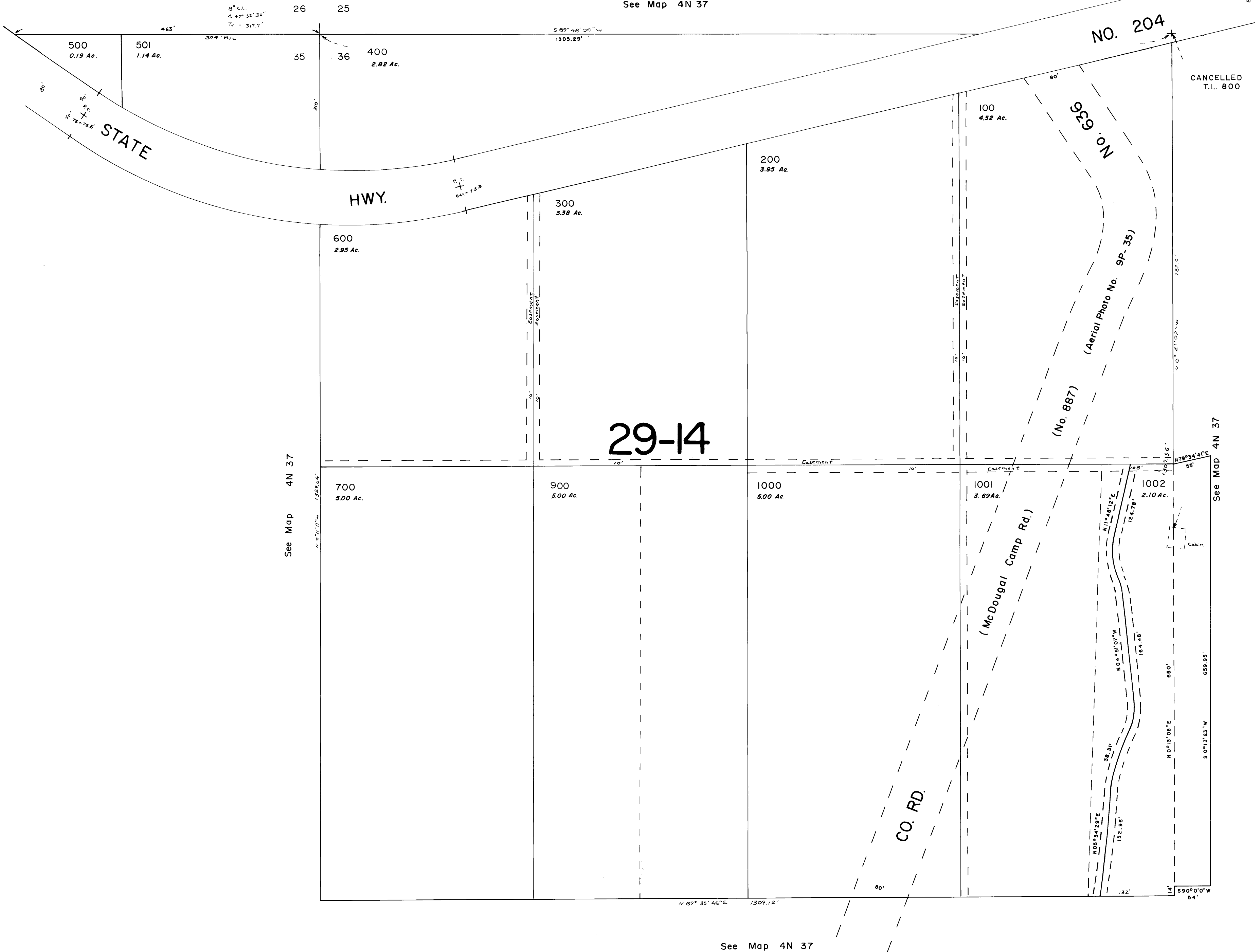
NW1/4 NW1/4 Sec. 36 T.4N. R.37E.W.M.
UMATILLA COUNTY

4N 37 36Bb

Aerial Photo No. 9P-33

1" = 100'

See Map 4N 37



See Map 4N 37

See Map 4N 37

See Map 4N 37

4N 37 36Bb