

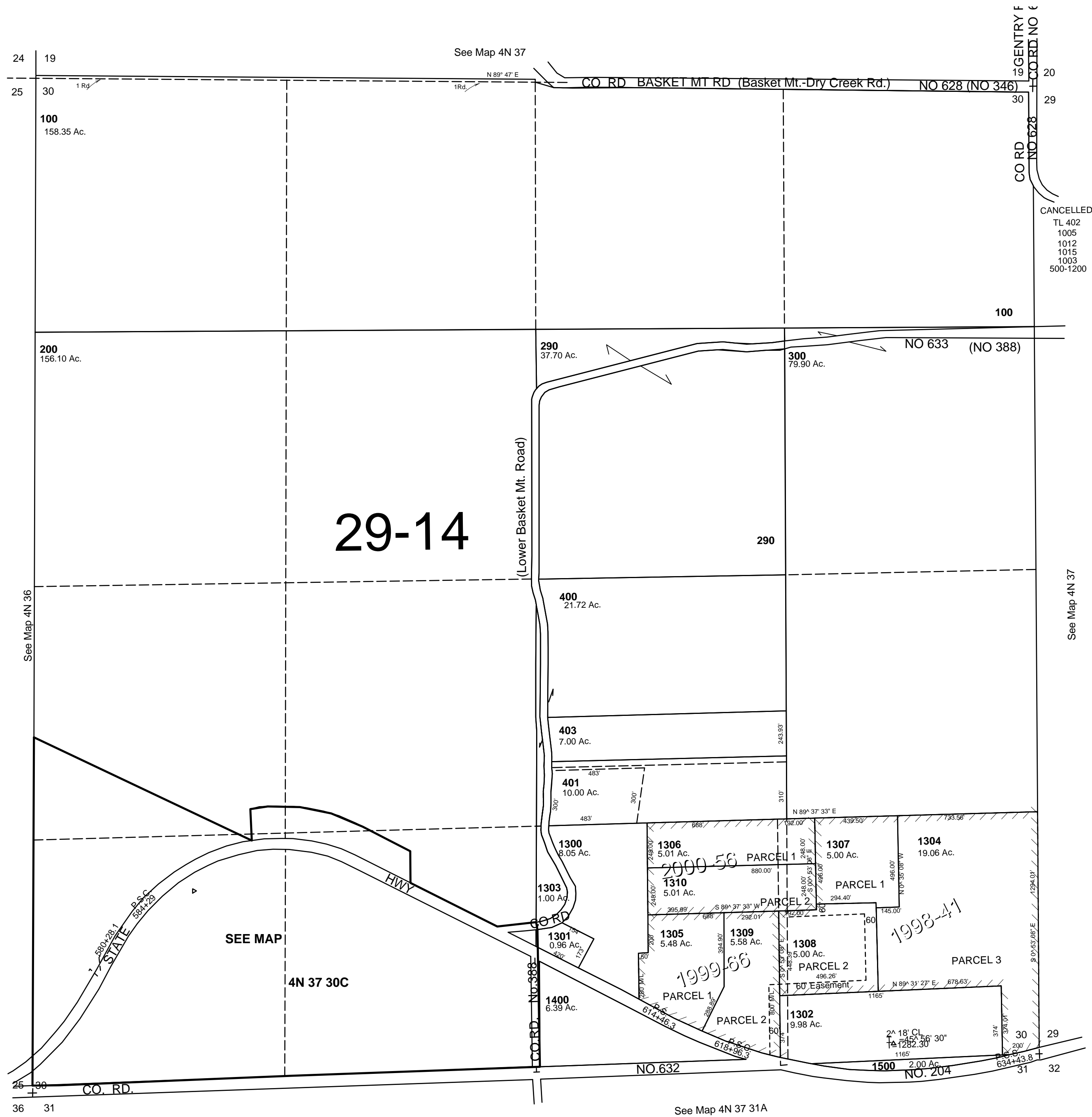
This map was prepared for Assessment & Taxation purposes only and was NOT prepared nor is it suitable for legal, engineering or surveying purposes.

# SEC 30 T4N R37E WM UMATILLA COUNTY

1"=400'

## 4N 37 30

AERIAL PHOTO NO. 9P-39



See Map 4N 37 31B

See Map 4N 37 31A

Revised: 9/08/09

## 4N 37 30