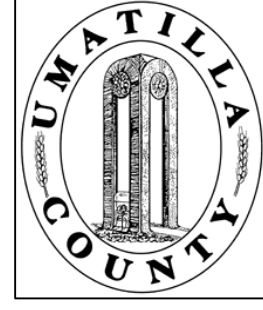


This map was prepared for Assessment & Taxation purposes only and was NOT prepared nor is it suitable for legal, engineering or surveying purposes.



SW1/4 SEC 29 T 4N R 37E WM UMATILLA COUNTY, OR

4N 37 29C

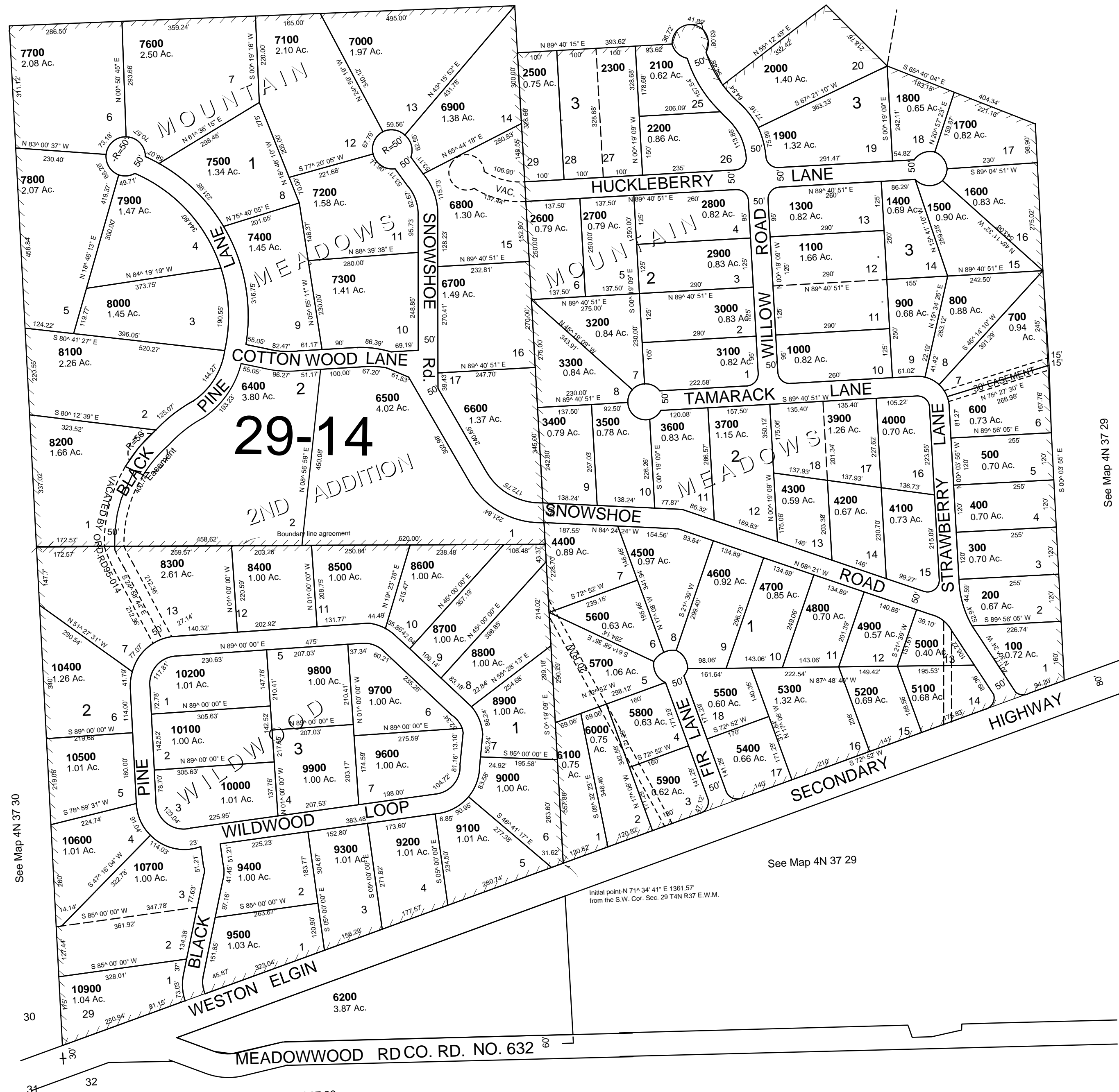
SCALE: 1" = 200'

AERIAL PHOTO NO. 9P-39

See Map 4N 37 29

See Map 4N 37 29B

CANCELLED
6300
1200
2400
10300
3800
10800



See Map 4N 37 30

See Map 4N 37 29

See Map 4N 37 29

Initial point-N 71° 34' 41" E 1361.57'
from the S.W. Cor. Sec. 29 T4N R37 E.W.M.

Revised: 01-19-16

4N 37 29C

See Map 4N 37 32