

This map was prepared for Assessment & Taxation purposes only and was NOT prepared nor is it suitable for legal, engineering or surveying purposes.

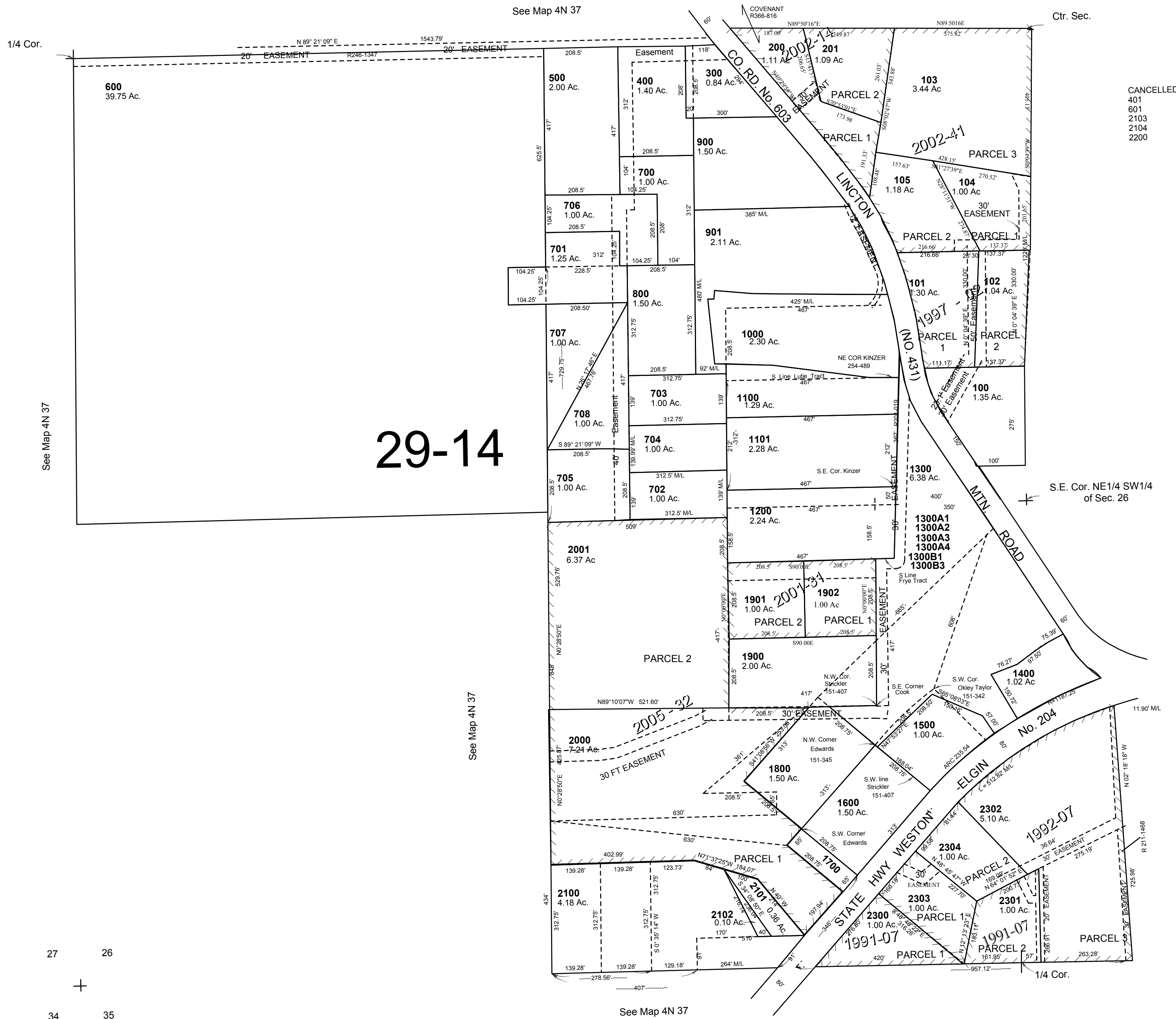


SW1/4 SEC 26 T4N R37E WM UMATILLA COUNTY

SCALE: 1" = 200'

4N3726C

AERIAL PHOTO 9P-35



CANCELLED
401
501
2103
2104
2200

See Map 4N 37 26D

Revised: 12-28-17

4N3726C