

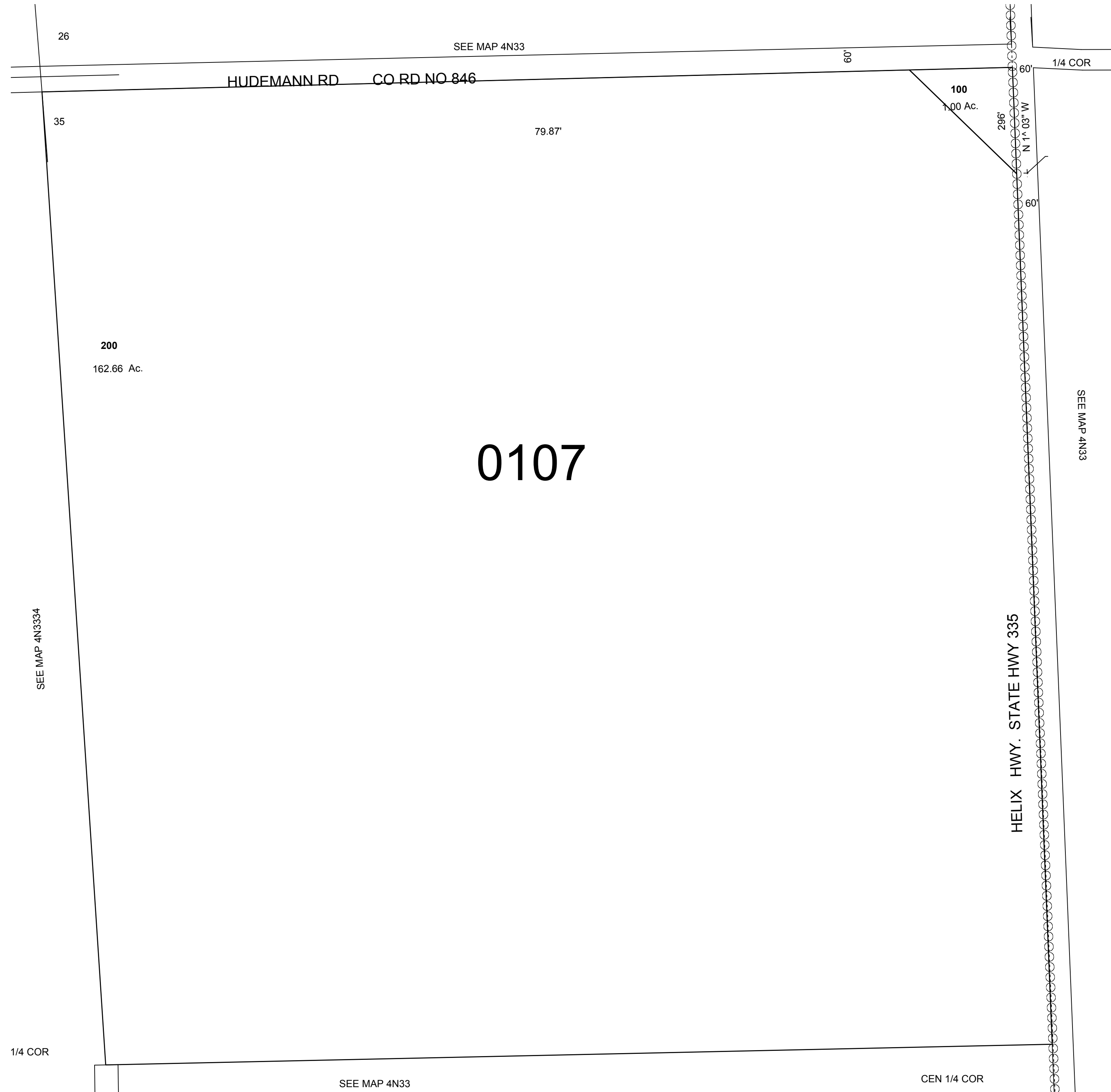
This map was prepared for Assessment & Taxation purposes only and was NOT prepared nor is it suitable for legal, engineering or surveying purposes.

# NW 1/4 SEC 35 T4 N R33 E WM UMATILLA COUNTY

## 4N 33 35B

AERIAL PHOTO NO NZ 6P 50-54, 106-111 & 127-131

SCALE 1"=100'



# 0107

200  
162.66 Ac.

100  
100 Ac.

296'  
N 1° 03' W

SEE MAP 4N33

HELIX HWY. STATE HWY 335

SEE MAP 4N3334

REVISED: 12-12-16

## 4N3335B