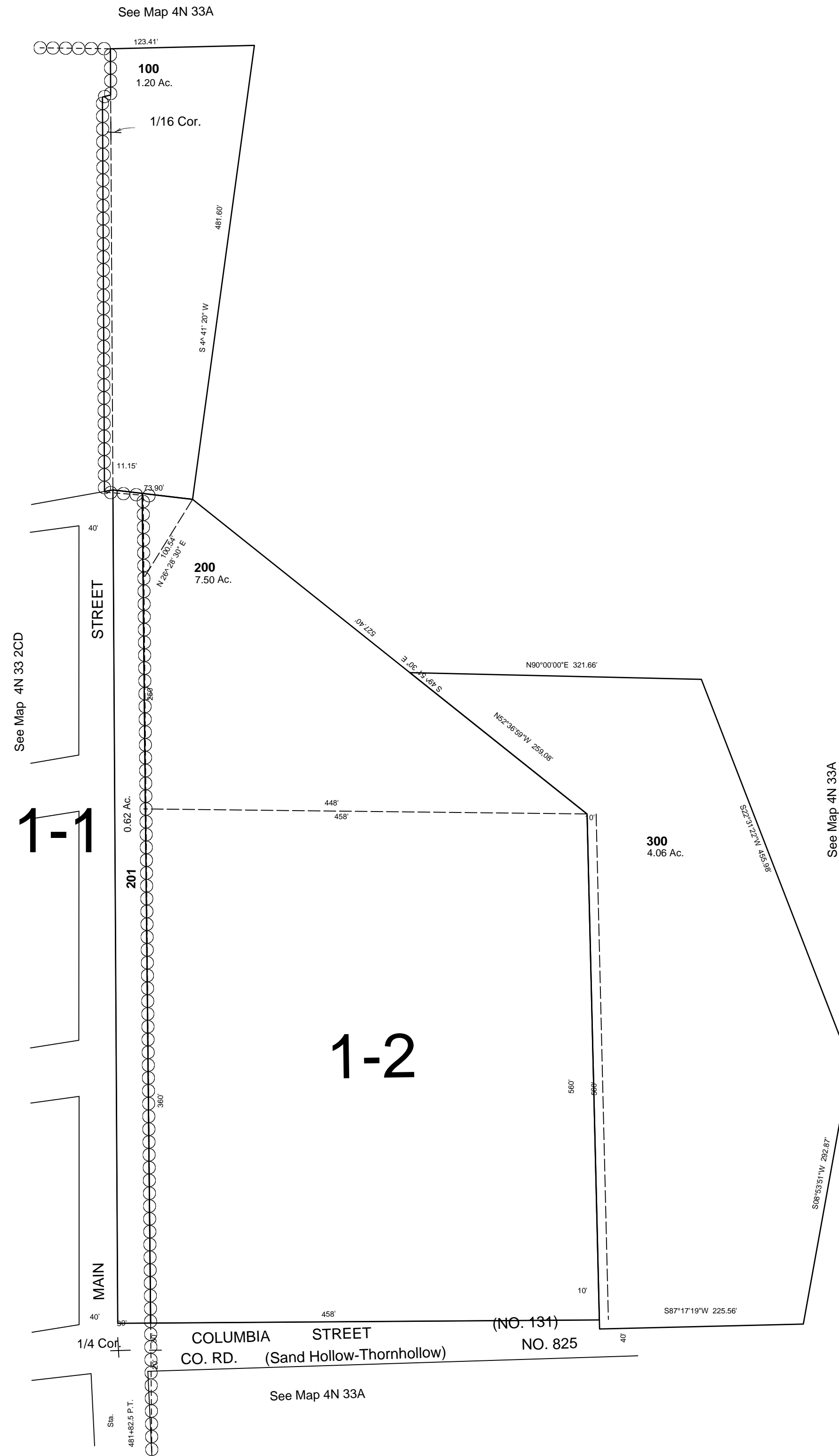


This map was prepared for Assessment & Taxation purposes only and has not been prepared for legal, engineering or surveying purposes.

SW 1/4 SE 1/4 SEC 2 T4N R33E WM UMATILLA COUNTY

SCALE 1"=100'

4N 33 02DC
AERIAL PHOTO NO 6P-54



1/16 Cor.

Revised: 06-10-15

1/16 Cor.

4N 33 02DC