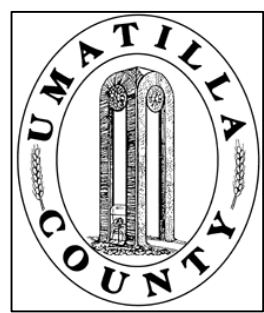


This map was prepared for Assessment & Taxation purposes only and was NOT prepared nor is it suitable for legal, engineering or surveying purposes.



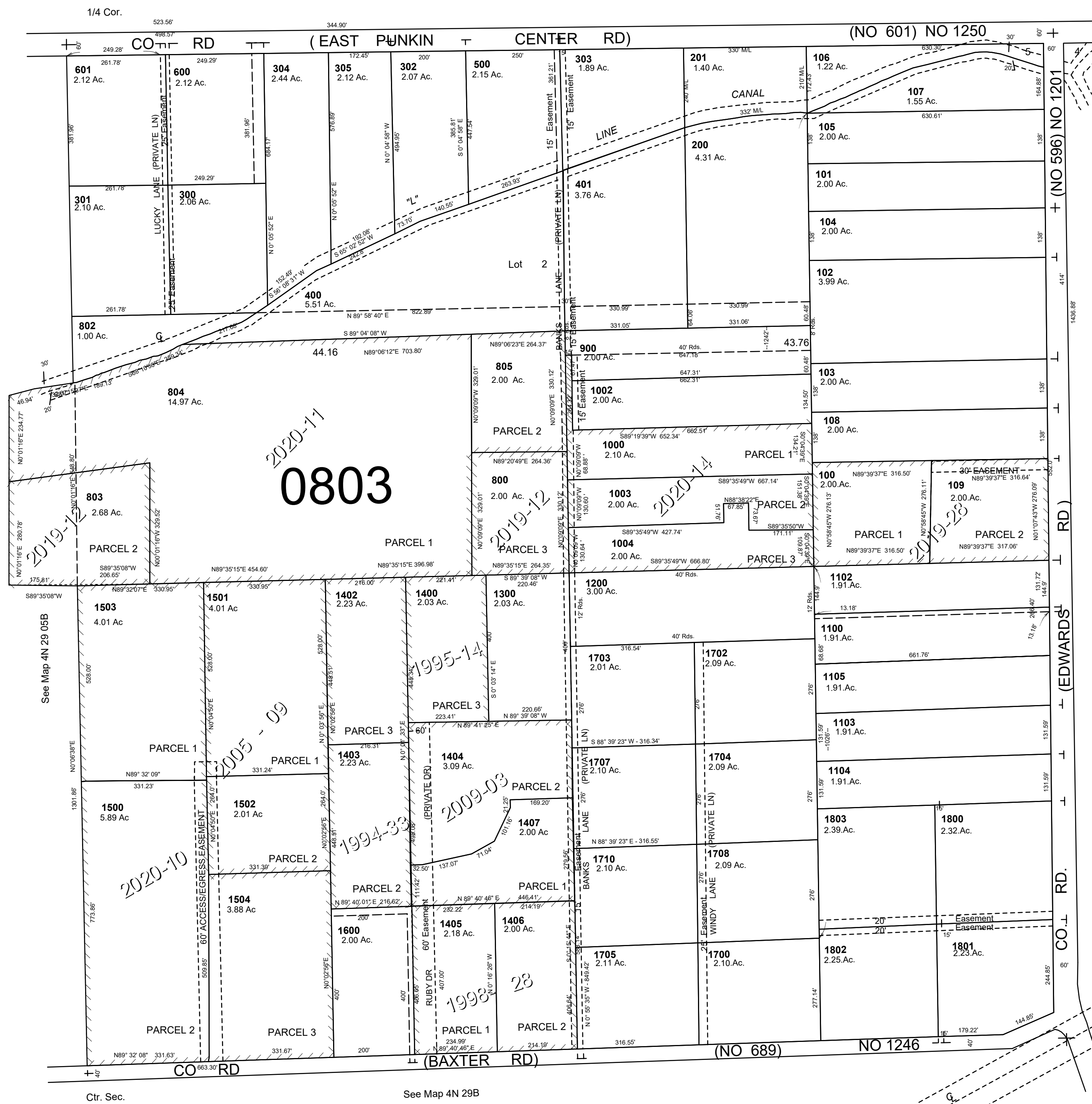
# NE1/4 SEC 5 T 4N R 29 E WM UMATILLA COUNTY, OR

## 4N2905A

SCALE: 1" = 200'

Aerial Photo No. NZ-1P-125  
& 126

See Map 5N 29 32



- Cancelled No
- 306
- 700
- 801
- 901
- 902
- 1001
- 1101
- 1401
- 1701
- 1706
- 1709
- 1900
- 307

See Map 4N 29B

Revised:06-16-2020

## 4N2905A