

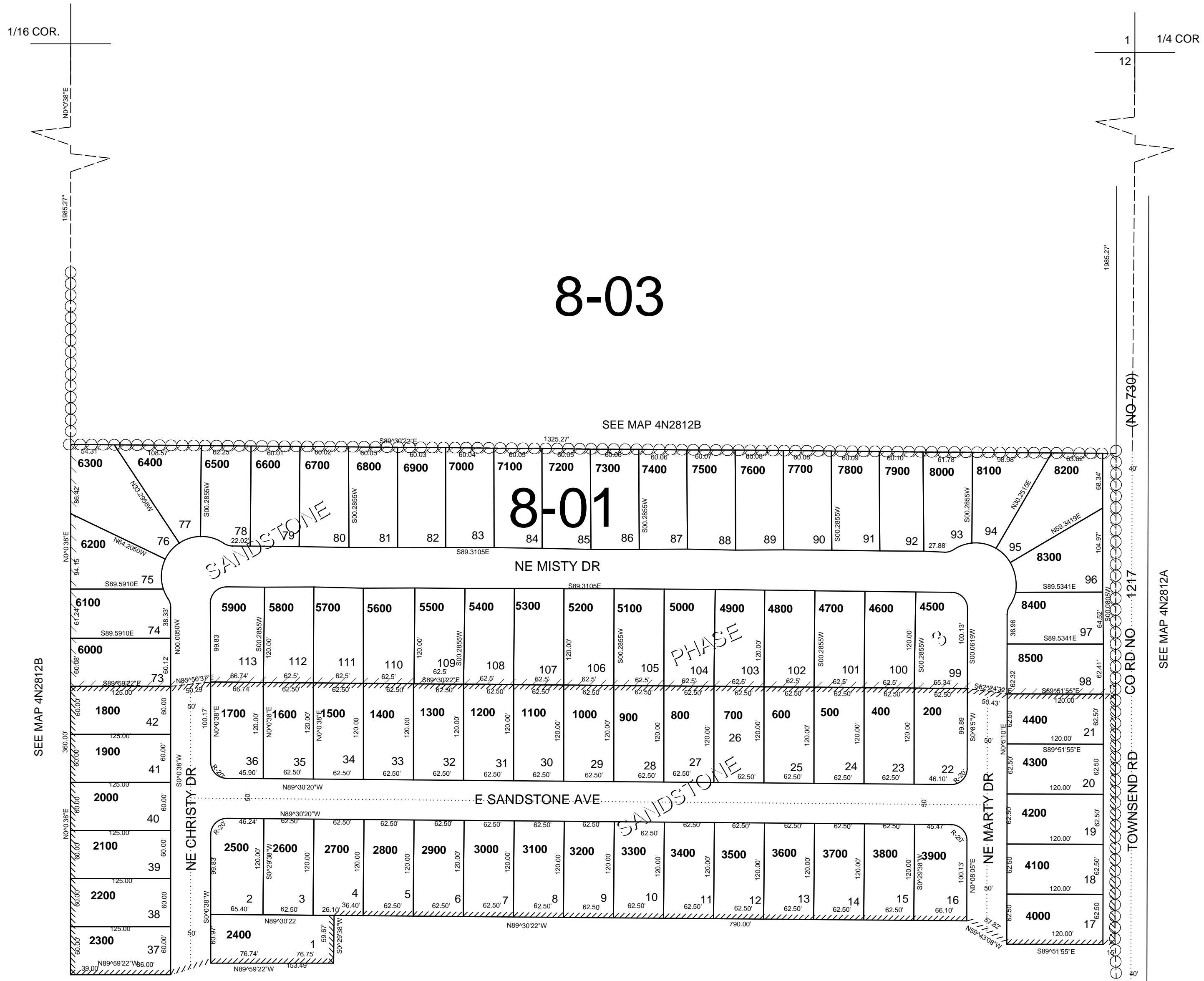
This map was prepared for Assessment & Taxation purposes only and was NOT prepared nor is it suitable for legal, engineering or surveying purposes.

SE1/4 NW1/4 SEC 12 T4N R28E WM UMATILLA COUNTY SCALE 1"=100'

11/06/06

4N 28 12BD

AERIAL PHOTO NO 1P-123



CANCELLED
100
300

SEE MAP 4N2812C

4N 28 12BD