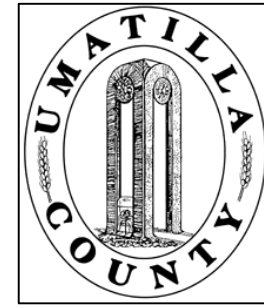


This map was prepared for Assessment & Taxation purposes only and was NOT prepared nor is it suitable for legal, engineering or surveying purposes.

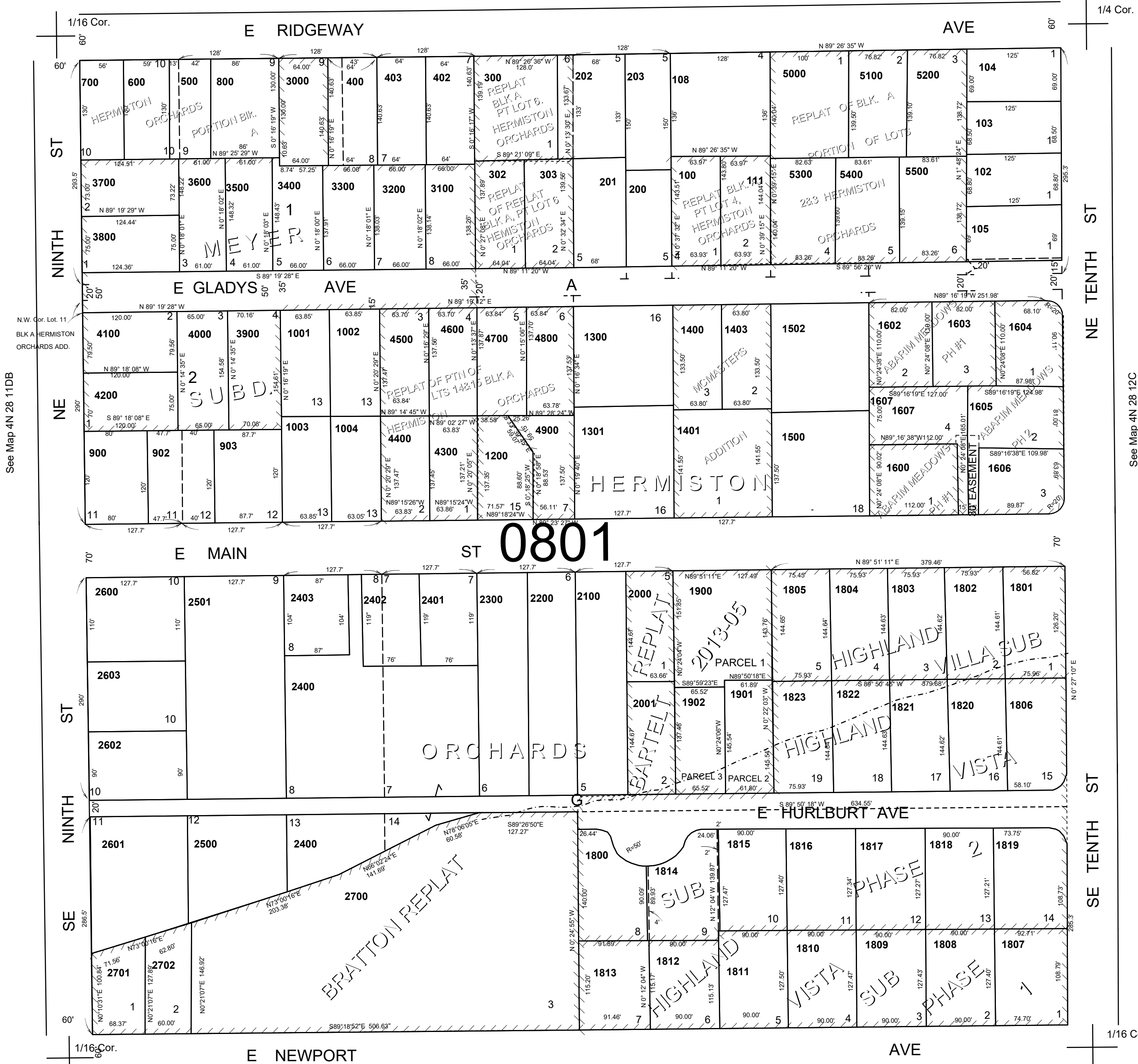


NE1/4 SE1/4 SEC 11 T4N R28E WM  
UMATILLA COUNTY

4N 28 11DA  
AERIAL PHOTO NO. NZ-1P-123

SCALE: 1" = 100'

See Map 4N 28 11AD



See Map 4N 28 11DB

N.W. Cor. Lot 11  
BLK A HERMISTON  
ORCHARDS ADD.

1/16 Cor.

NE TENTH ST

SE TENTH ST

1/16 Cor.

CANCELLED  
TL 1700  
2800  
106  
401  
404  
801  
901  
109  
110  
204  
205  
1000  
1202  
1302  
1501  
1601  
1402  
301  
1100  
1201  
101  
107  
1890

See Map 4N 28 12C

See Map 4N 28 11DD

Revised:03-19-19

4N 28 11DA