

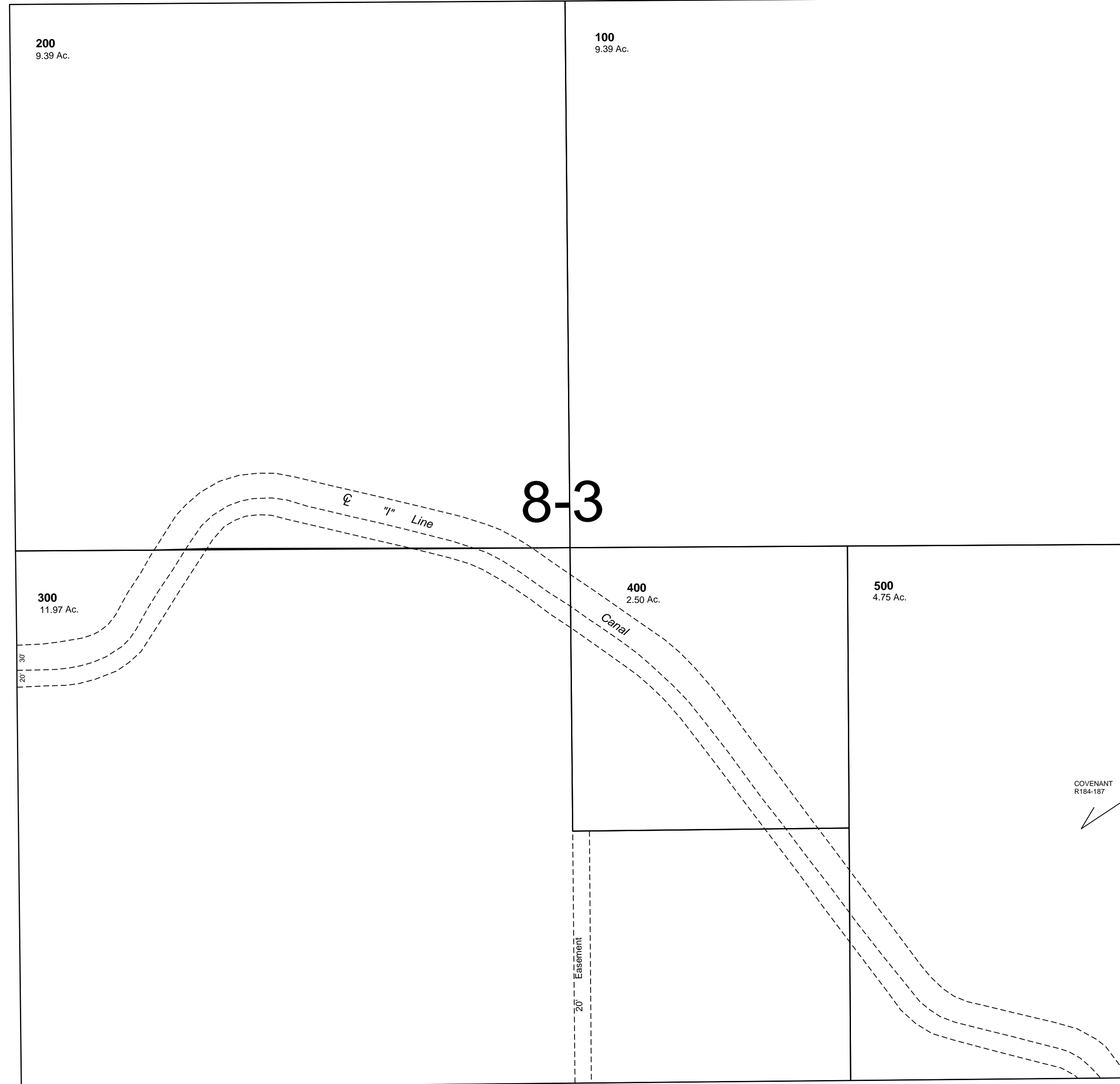
This map was prepared for Assessment & Taxation purposes only and was NOT prepared nor is it suitable for legal, engineering or surveying purposes.

SE1/4 SW1/4 SEC 9 T4N R28E WM
UMATILLA COUNTY
SCALE 1"=100'

4N 28 09CD

See Map 4N 28B

1/16 Cor. CO. RD. (W. Orchard Ave.) (No. 695) No. 1238 1/16 Cor.



See Map 4N 28 09CC

See Map 4N 28 09DC

1/16 Cor. CO. RD. (Bridge Rd.) (No. 610) No. 1215 1/4 Cor.

N 88° 51' W

See Map 4N 28B

Revised: 5/17/11

4N 28 09CD