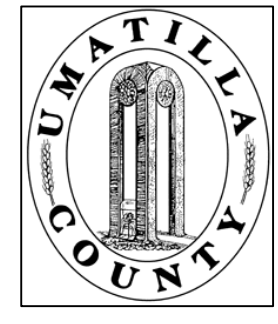


This map was prepared for Assessment & Taxation purposes only and was NOT prepared nor is it suitable for legal, engineering or surveying purposes.

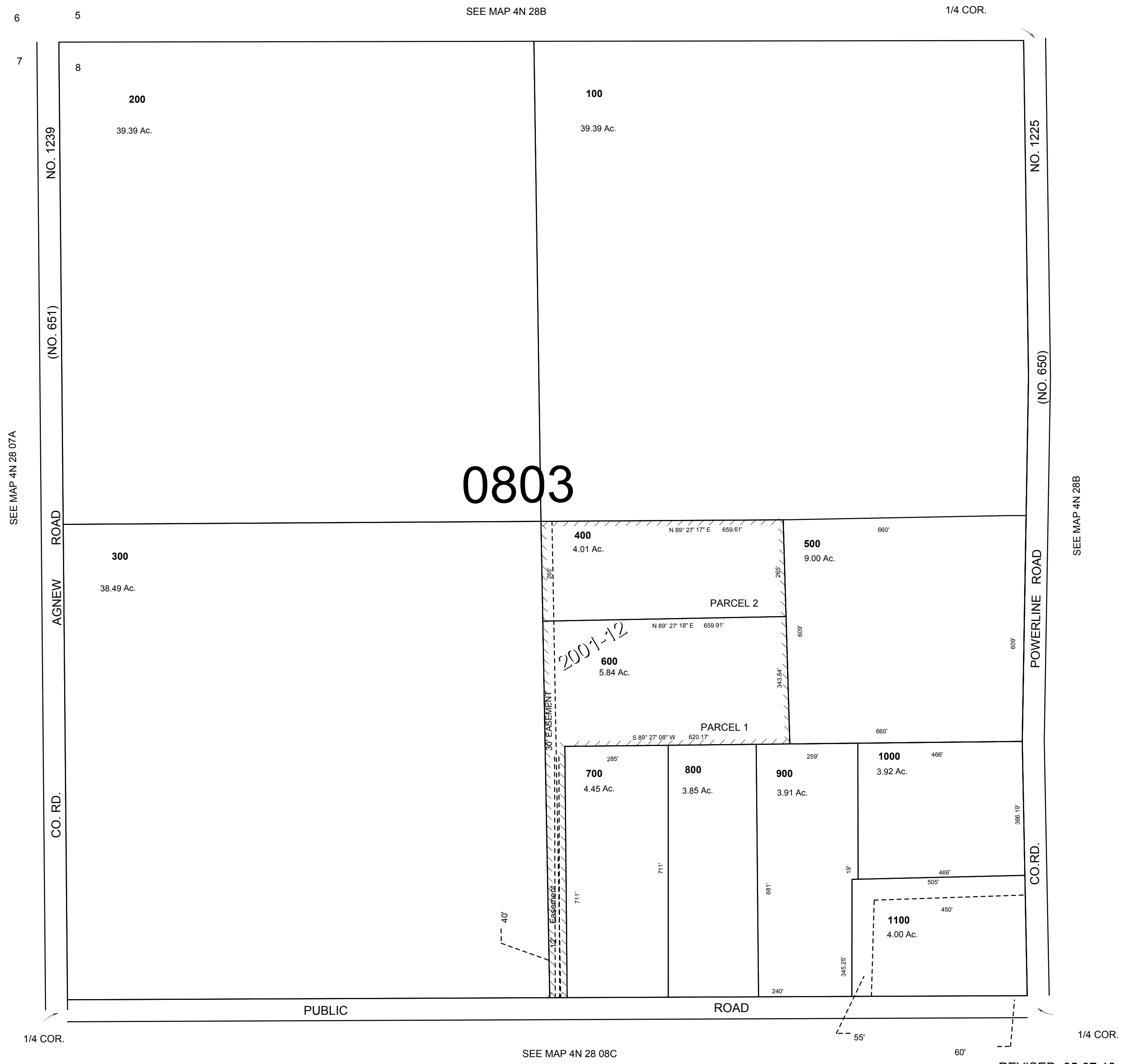


NW1/4 SEC 8 T4N R28E WM

UMATILLA COUNTY, OR

SCALE: 1" = 200

4N 28 08B
AERIAL PHOTO NO. NZ-2P-25-26
1P-119-120



4N 28 08B