

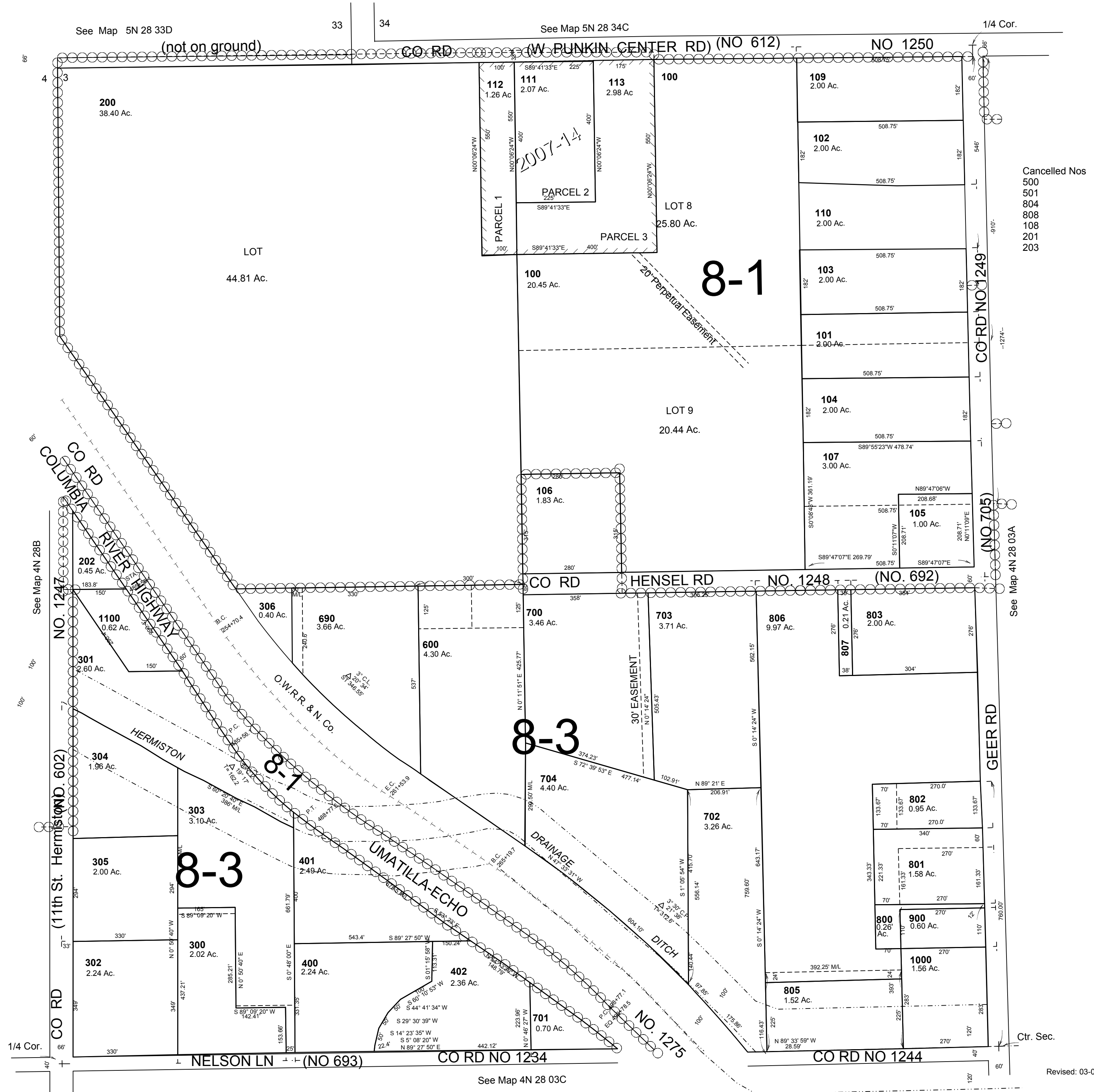
This map was prepared for Assessment & Taxation purposes only and was NOT prepared nor is suitable for legal, engineering or surveying purposes.

NW 1/4 SEC 3 T4N R28E WM UMATILLA COUNTY

SCALE 1" = 200'

4N2803B

AERIAL PHOTO NO 1P-121



Cancelled Nos
500
501
804
808
108
201
203

Ctr. Sec.

Revised: 03-03-17

4N2803B