

This map was prepared for Assessment & Taxation purposes only and was NOT prepared nor is it suitable for legal, engineering or surveying purposes.

NW1/4 SW1/4 SEC 32 T4N R29E WM UMATILLA COUNTY

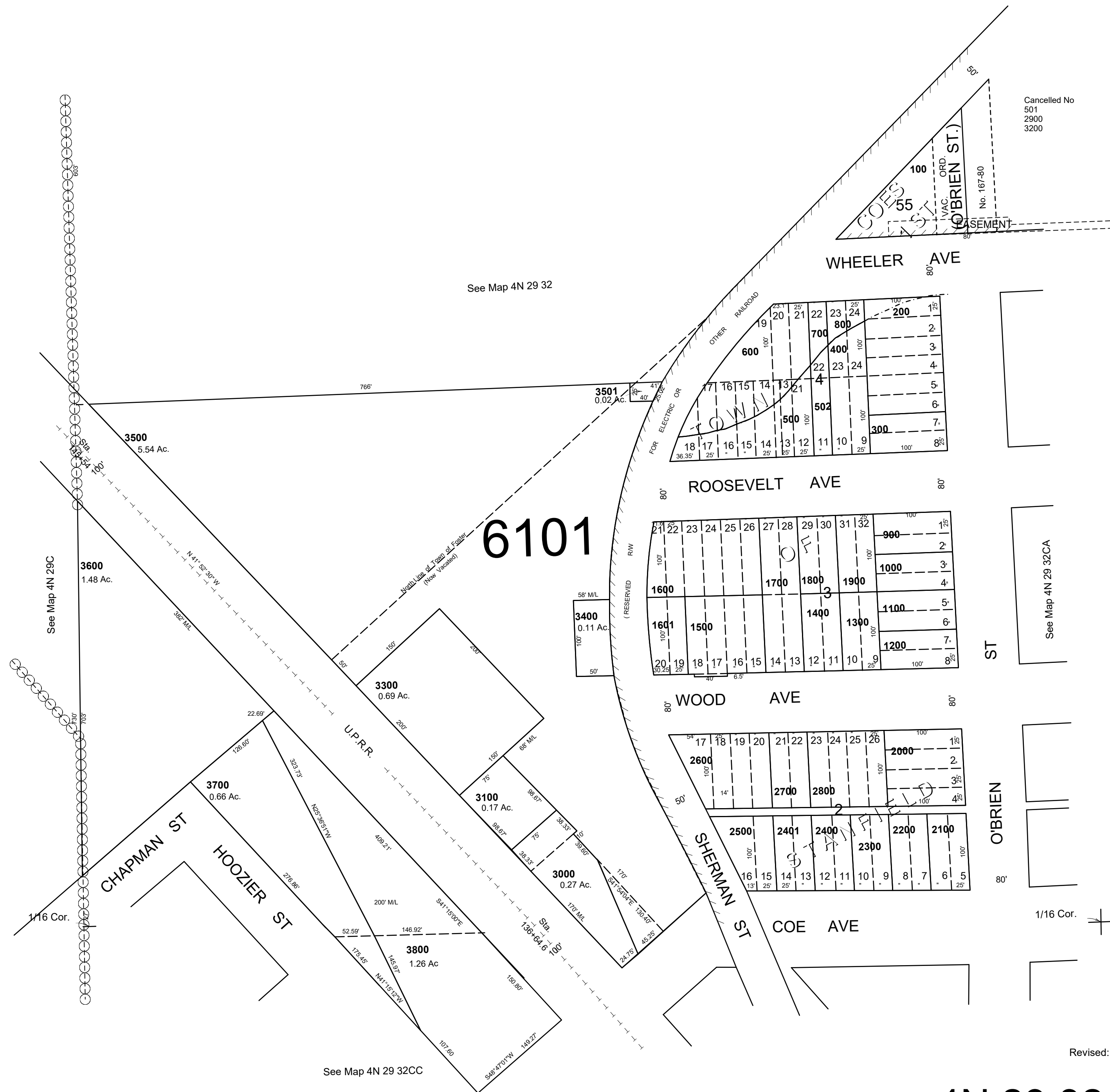
4N 29 32CB

AERIAL PHOTO NO. NZ 2P-45

1"=100'

1/16 Cor.

1/4 Cor.



Cancelled No
501
2900
3200

See Map 4N 29 32

See Map 4N 29C

See Map 4N 29 32CA

See Map 4N 29 32CC

Revised: 01-23-19

4N 29 32CB