

This map was prepared for Assessment & Taxation purposes only and was NOT prepared nor is it suitable for legal, engineering or surveying purposes.

Cancelled Tax Lots
3400
3500

SHEET NO.1

SEC 23 T4N R29E WM

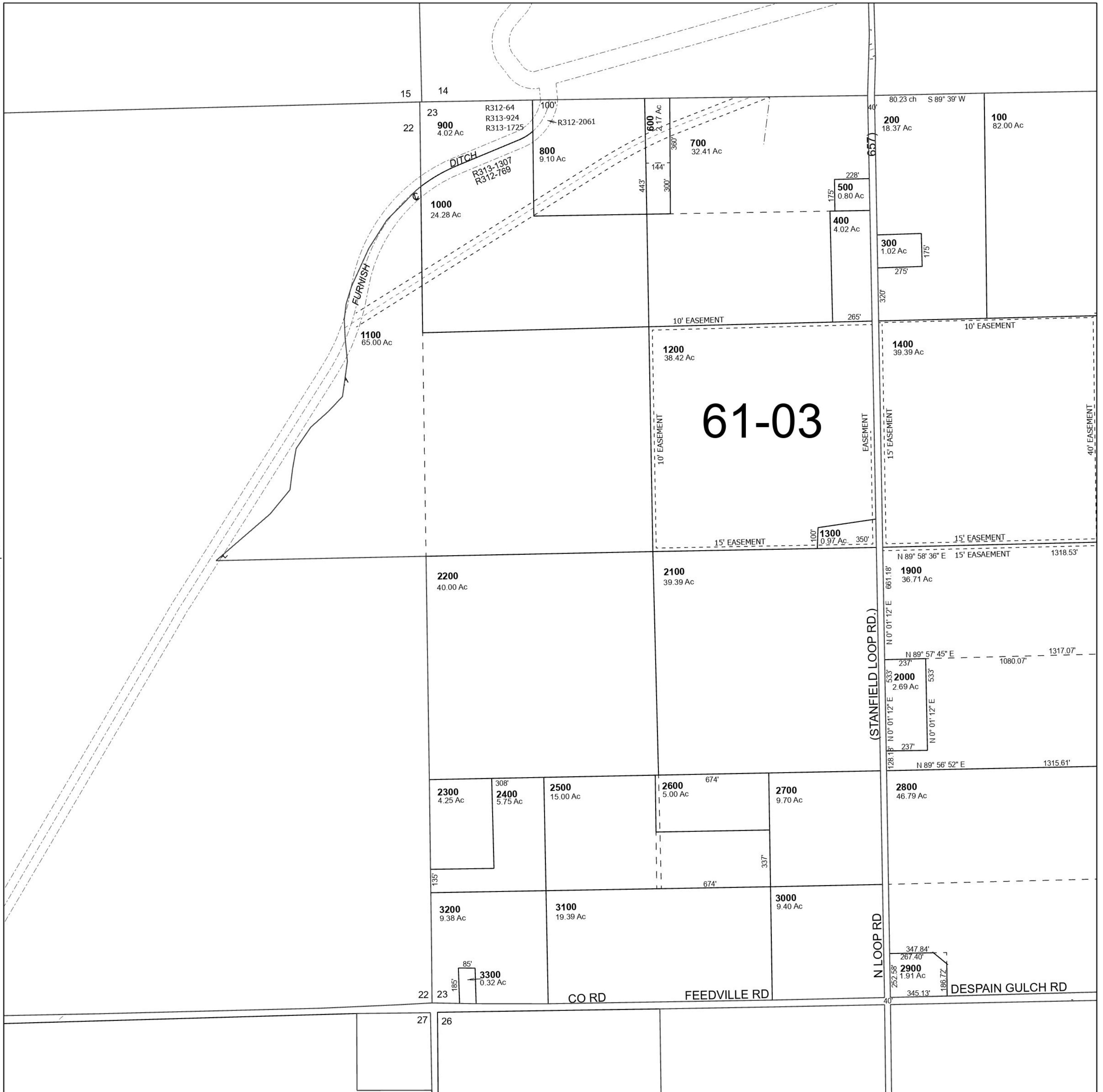
UMATILLA COUNTY

4N 29 23

SHEET NO.1

SCALE 1" =400'

See Map 4N 29 14



See Map 4N 29 22

See Map 4N 29

Revised 1/26/2024

See Map 4N 29 26

SHEET NO.1 4N 29 23

SHEET NO.2

SEC 23 T4N R29E WM

UMATILLA COUNTY

4N 29 23
SHEET NO.2

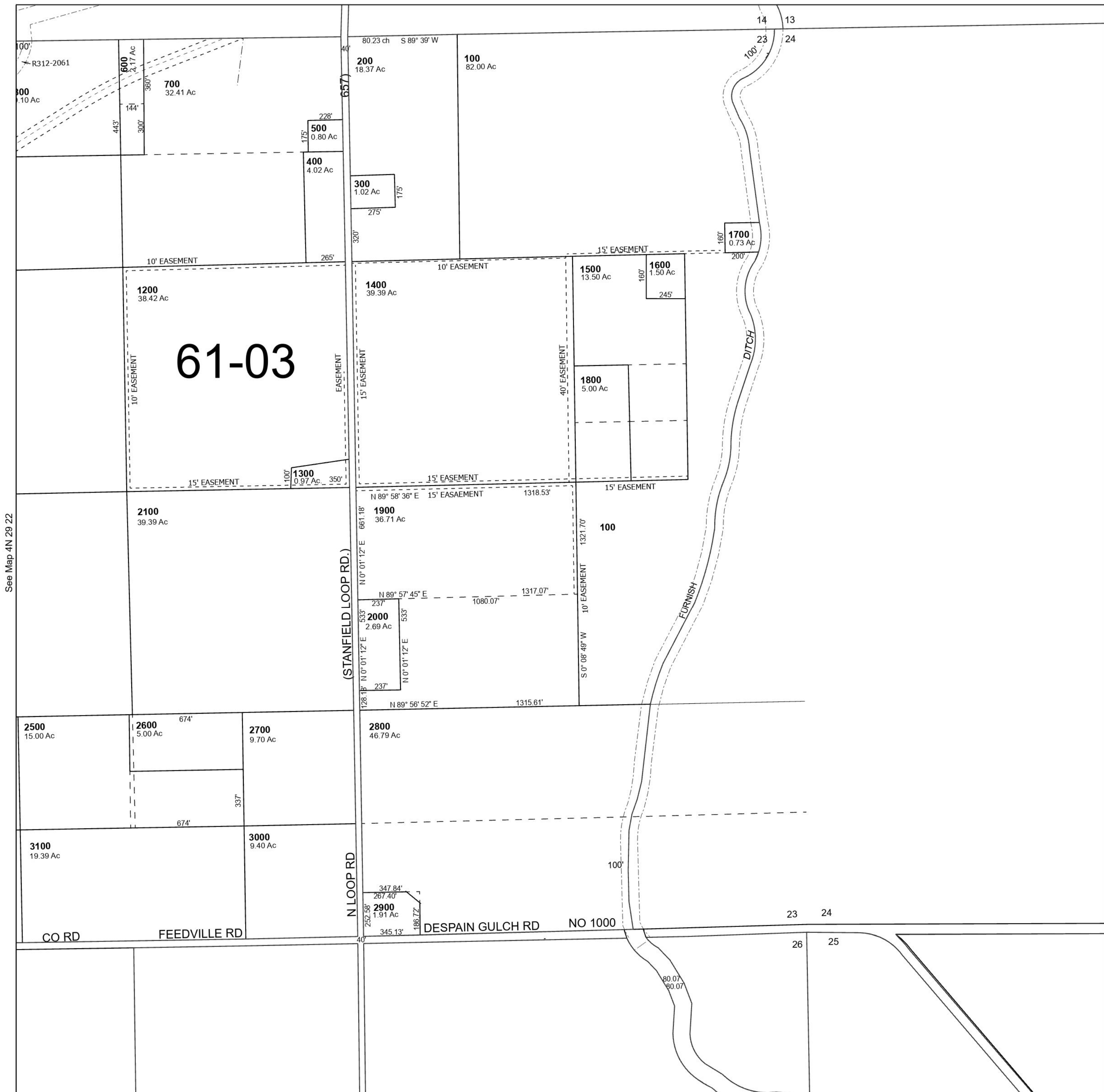
SCALE 1" = 400'

See Map 4N 29 14

This map was prepared for Assessment & Taxation purposes only and was NOT prepared nor is it suitable for legal, engineering or surveying purposes.

Cancelled Tax Lots

3400
3500



See Map 4N 29 22

See Map 4N 29

See Map 4N 29 26

Revised 1/26/2024

SHEET NO.2 4N 29 23