

This map was prepared for Assessment & Taxation purposes only and was NOT prepared nor is it suitable for legal, engineering or surveying purposes.

Cancelled Tax Lots

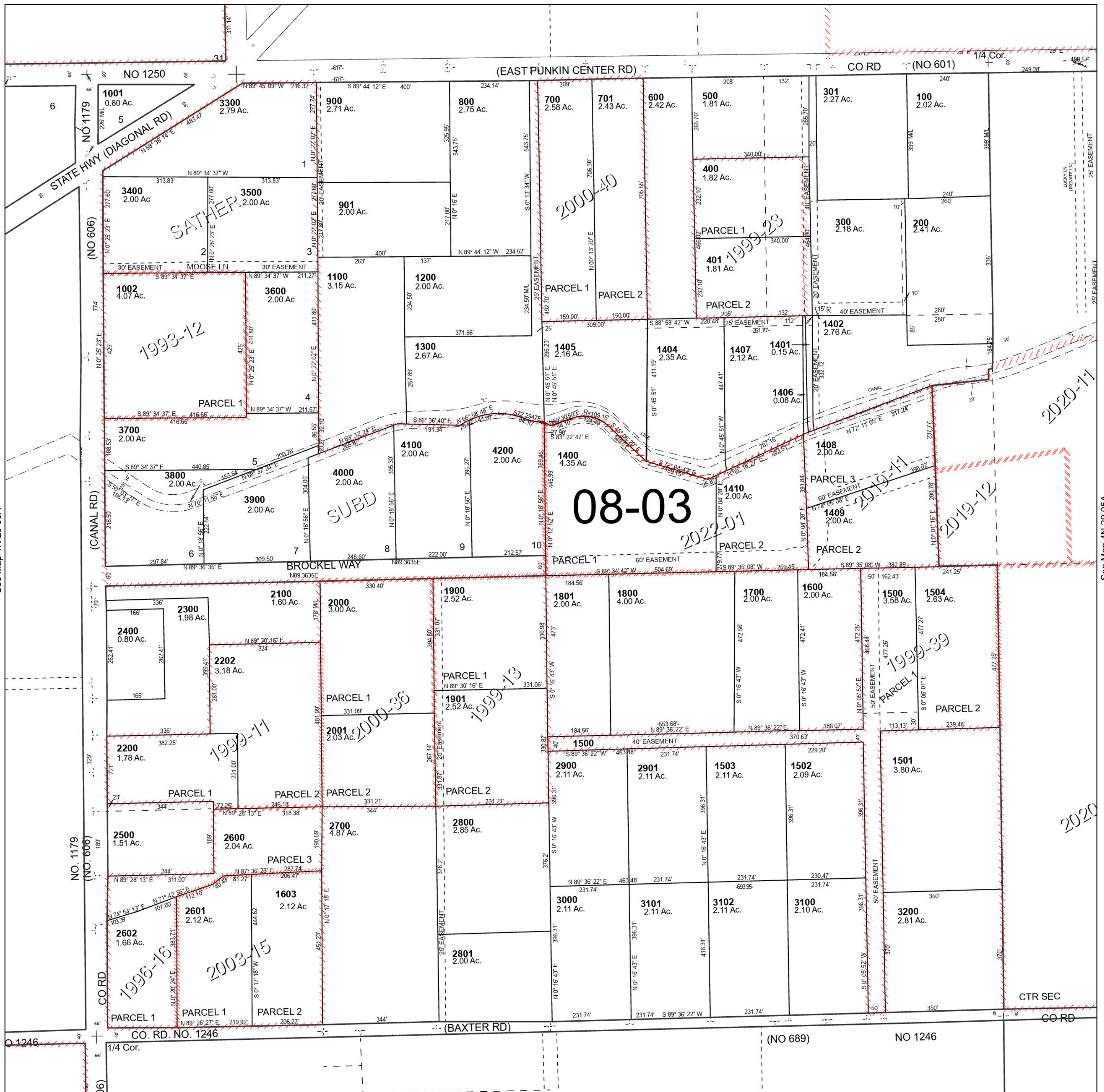
- 201
- 1000
- 1403
- 2201

NW 1/4 SEC 05 T4N R29E WM UMATILLA COUNTY

4N 29 05B

SCALE 1" = 200'

See Map 5N 29 32CC



See Map 4N 29 06A

See Map 4N 29 05A

4N 29 05B