

This map was prepared for Assessment & Taxation purposes only and was NOT prepared nor is it suitable for legal, engineering or surveying purposes.

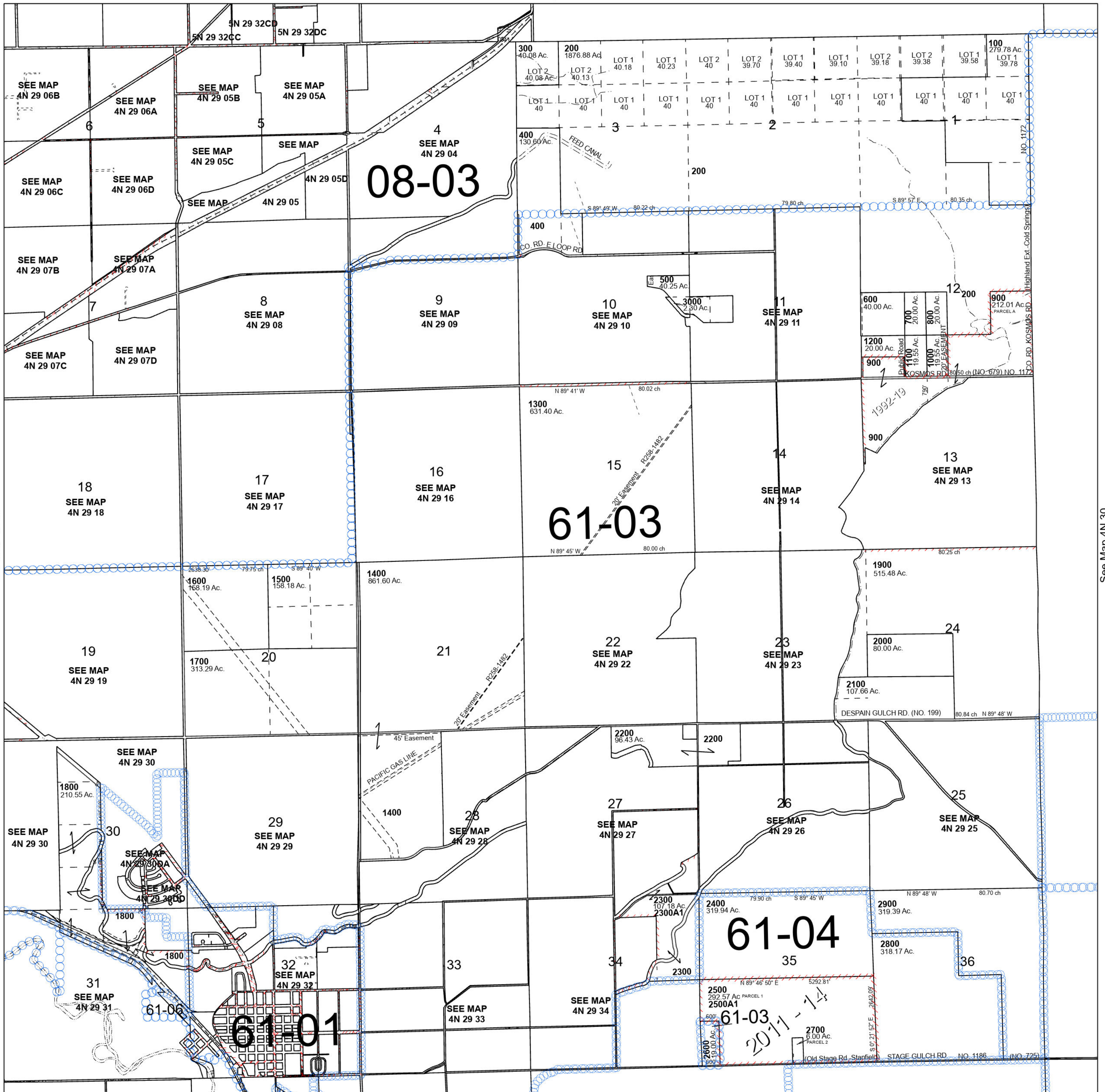
Cancelled Tax Lots

T4N R29E WM UMATILLA COUNTY

4N 29

SCALE 1" = 2,000'

See Map 5N 29



See Map 4N 28

See Map 4N 30

Revised 2/29/2024

See Map 3N 29

4N 29