

This map was prepared for Assessment & Taxation purposes only and was NOT prepared nor is it suitable for legal, engineering or surveying purposes.

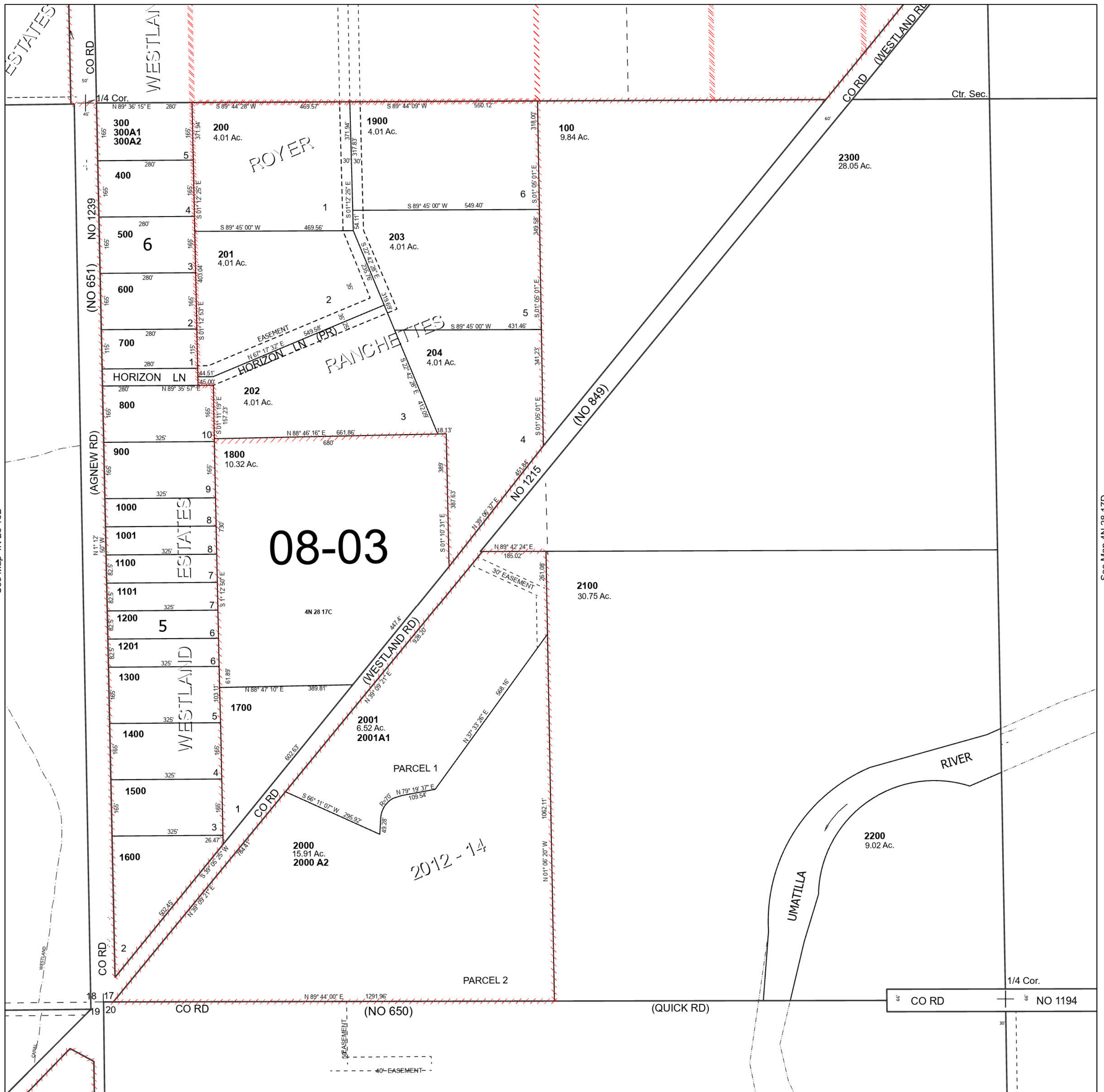
Cancelled Tax Lots

SW 1/4 SEC 17 T4N R28E WM UMATILLA COUNTY

4N 28 17C

SCALE 1" = 200'

See Map 4N 28 17B



See Map 4N 28 18D

See Map 4N 28 17D

Revised 6/22/2023

See Map 4N 28 20B

4N 28 17C