

This map was prepared for Assessment & Taxation purposes only and was NOT prepared nor is it suitable for legal, engineering or surveying purposes.

Cancelled Tax Lots

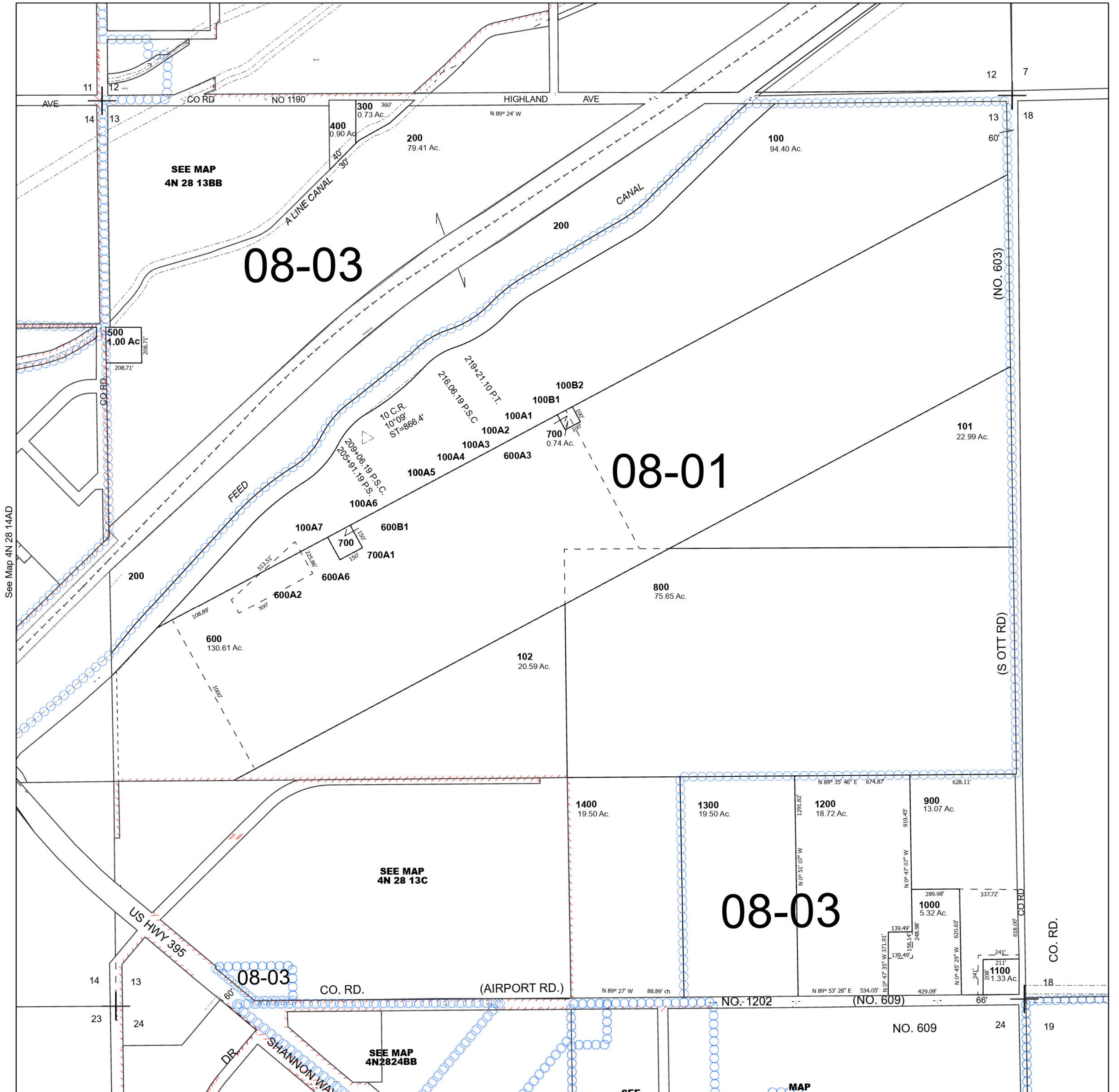
SEC 13 T4N R28E WM UMATILLA COUNTY

4N 28 13

Hermiston

SCALE 1" = 400'

See Map 4N 28 12D



See Map 4N 28 14AD

See Map 4N 29 18

Revised 5/16/2023

See Map 4N 28 24A

4N 28 13