

This map was prepared for Assessment & Taxation purposes only and was NOT prepared nor is it suitable for legal, engineering or surveying purposes.

Cancelled Tax Lots

- 100
- 200
- 201
- 300
- 301
- 900

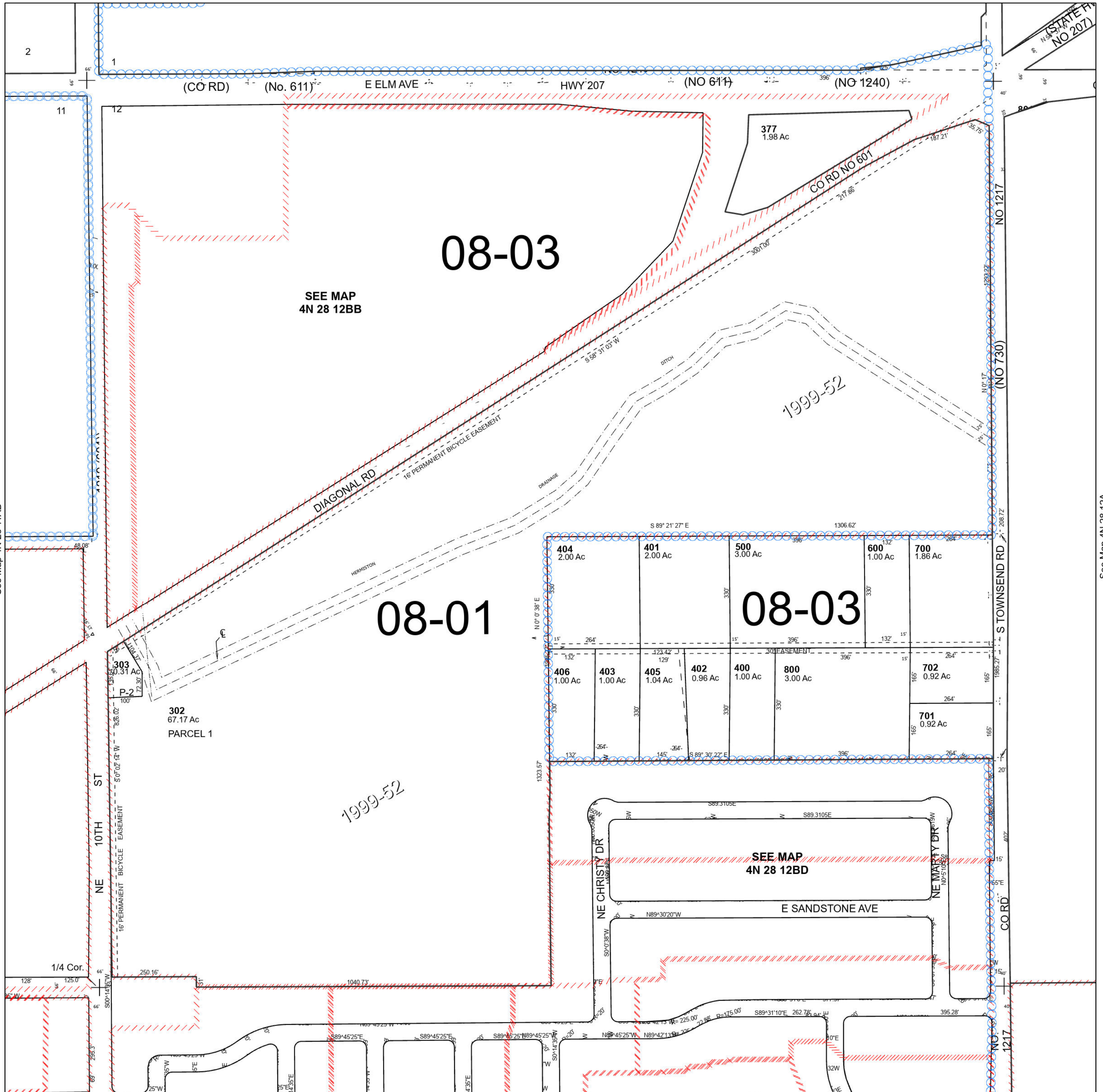
NW 1/4 SEC 12 T4N R28E WM UMATILLA COUNTY

4N 28 12B

Hermiston

SCALE 1" = 200'

See Map 4N 28 12BB



See Map 4N 28 11AD

See Map 4N 28 12A