

This map was prepared for Assessment & Taxation purposes only and was NOT prepared nor is it suitable for legal, engineering or surveying purposes.

NW 1/4 SE 1/4 SEC 11 T4N R28E WM UMATILLA COUNTY SCALE 1" = 100'

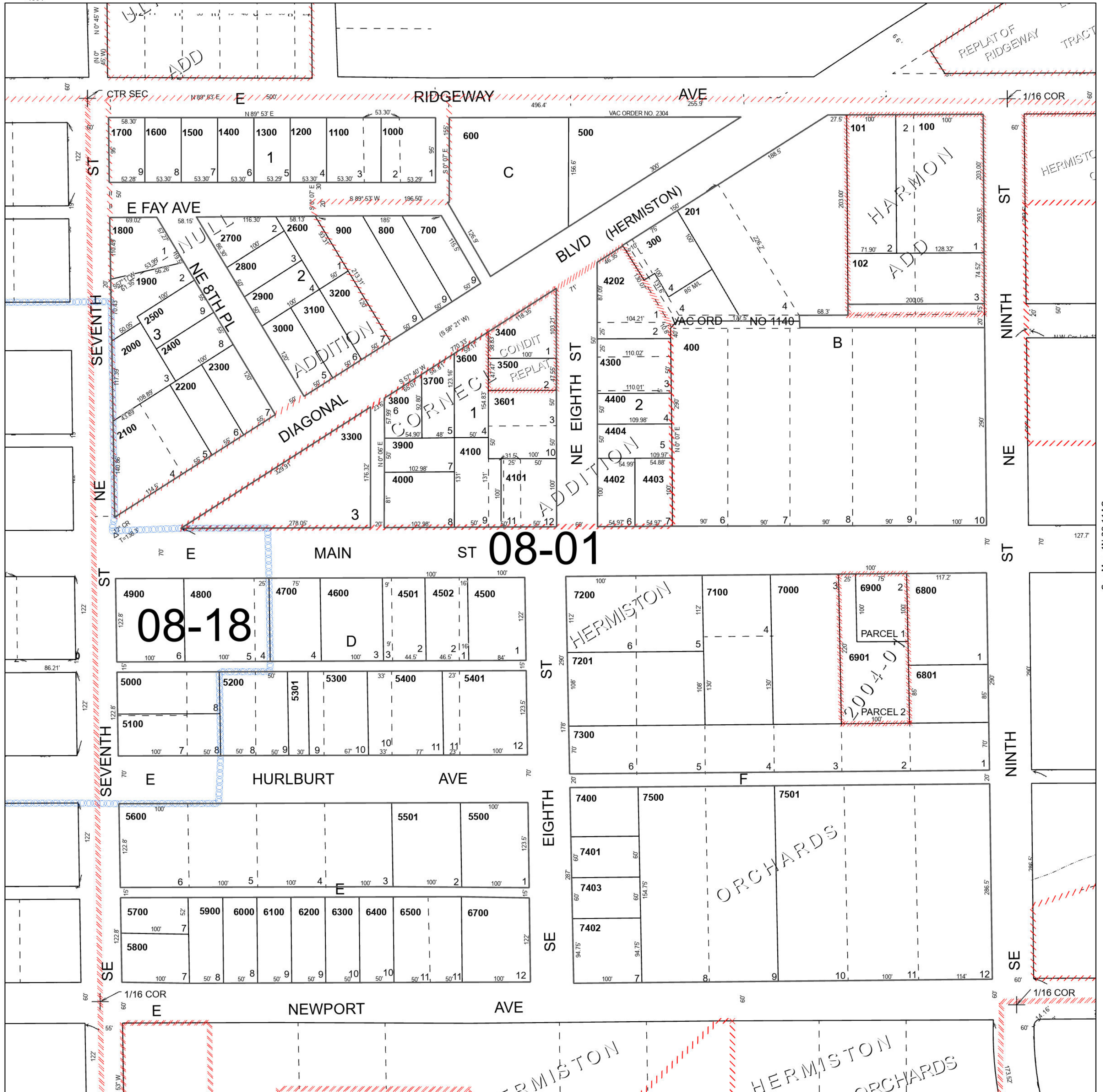
Hermiston

4N 28 11DB

Cancelled Tax Lots

- 200 4602
- 301 4603
- 302 4801
- 4102 6600
- 4200 7301
- 4201
- 4203
- 4204
- 4401
- 4601

See Map 4N 28 11AC



See Map 4N 28 11CA

See Map 4N 28 11AC

Revised 5/4/2023

See Map 4N 28 11DC

4N 28 11DB