

This map was prepared for Assessment & Taxation purposes only and was NOT prepared nor is it suitable for legal, engineering or surveying purposes.

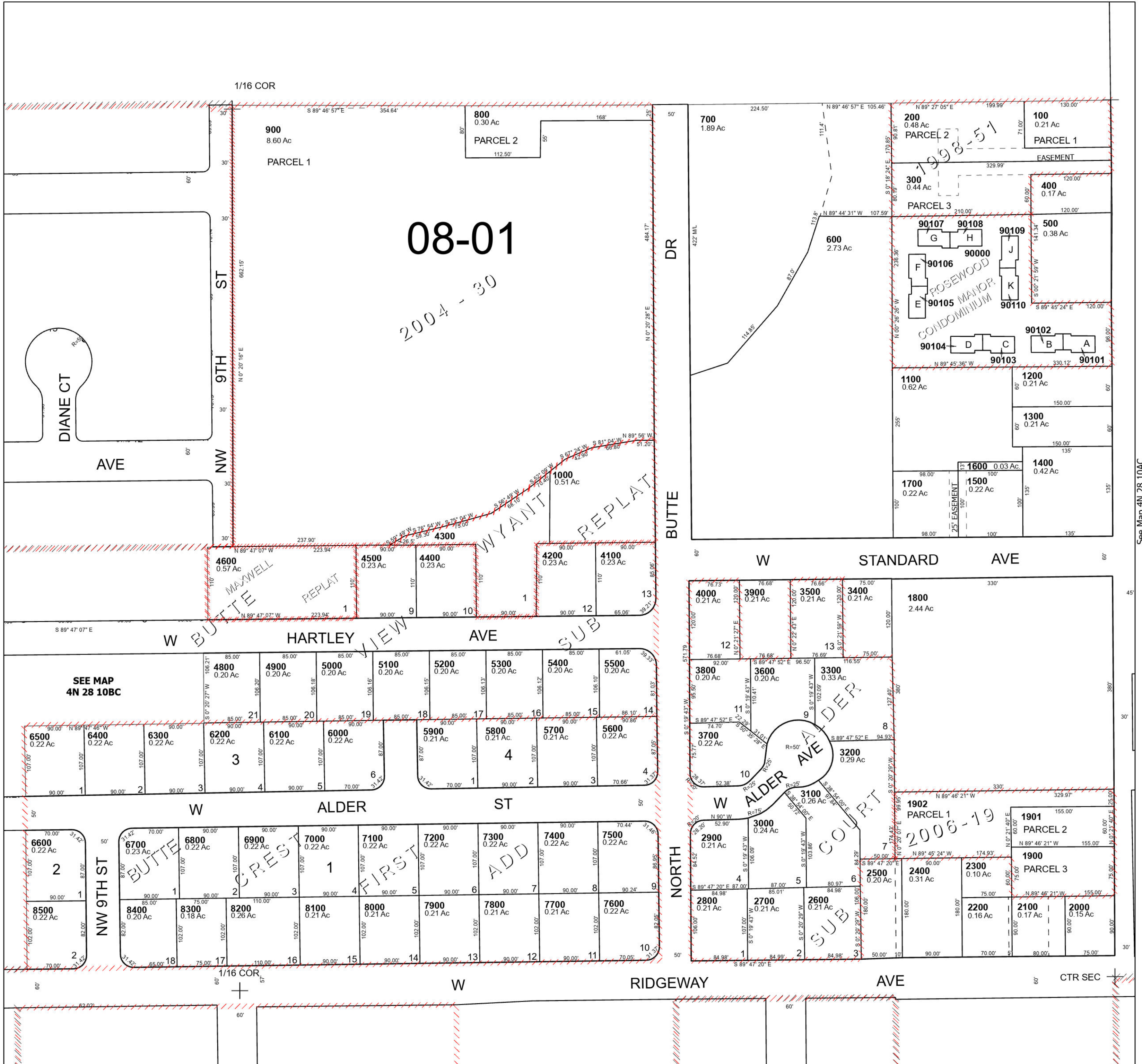
Cancelled Tax Lots  
4700

# SE 1/4 NW 1/4 SEC 10 T4N R28E WM UMATILLA COUNTY SCALE 1" = 100'

Hermiston

## 4N 28 10BD

See Map 4N 28 10B



See Map 4N 28 10BC

See Map 4N 28 10AC