

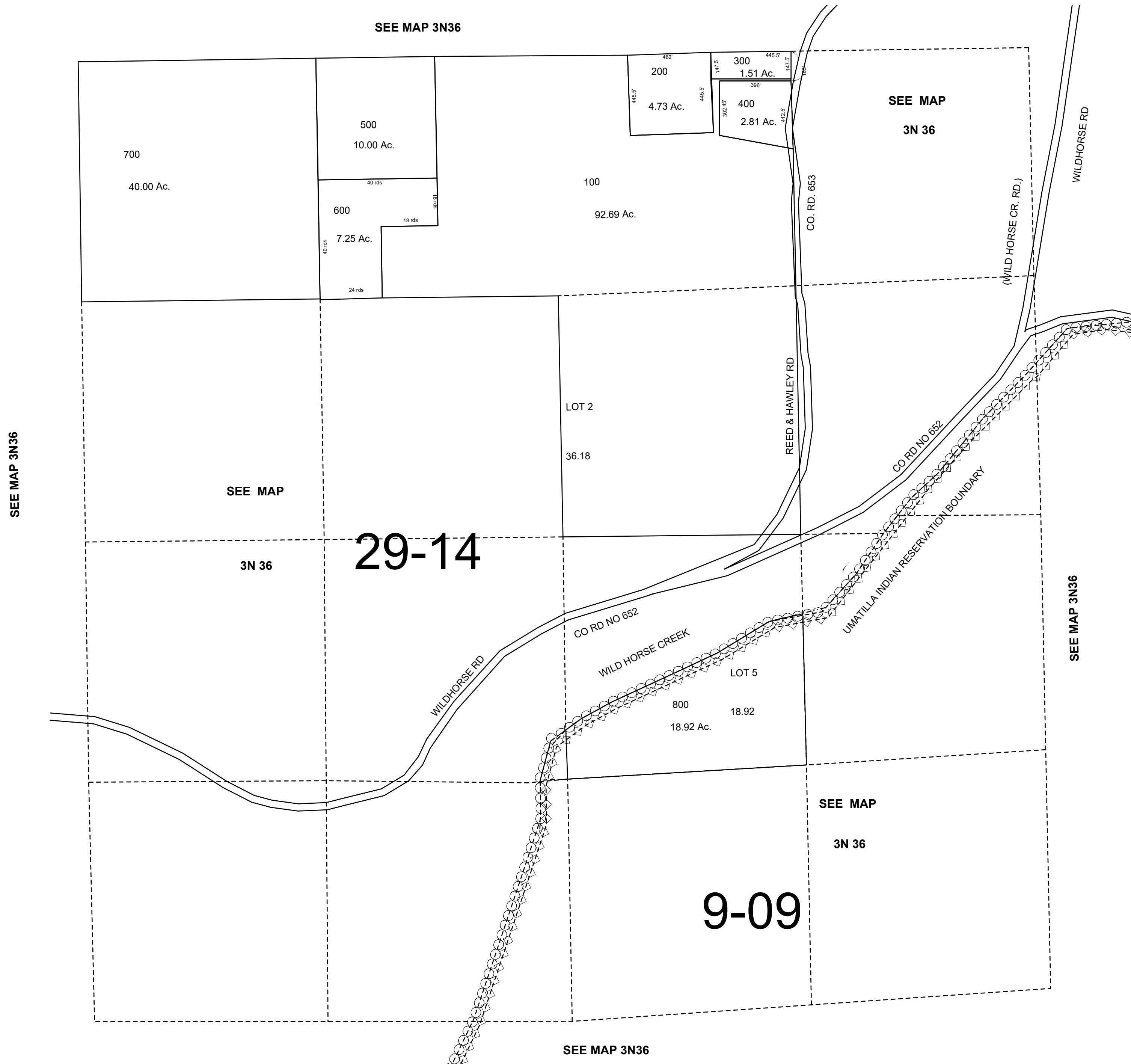
This map was prepared for Assessment & Taxation purposes only and was NOT prepared nor is it suitable for legal, engineering or surveying purposes.

SEC 8 T3NR36E WM UMATILLA COUNTY

3N3608

AERIAL PHOTO NO 4P 133 & 143-147
4P 155-159

SCALE 1"=400'



Revised: 06-01-20

3N3608