

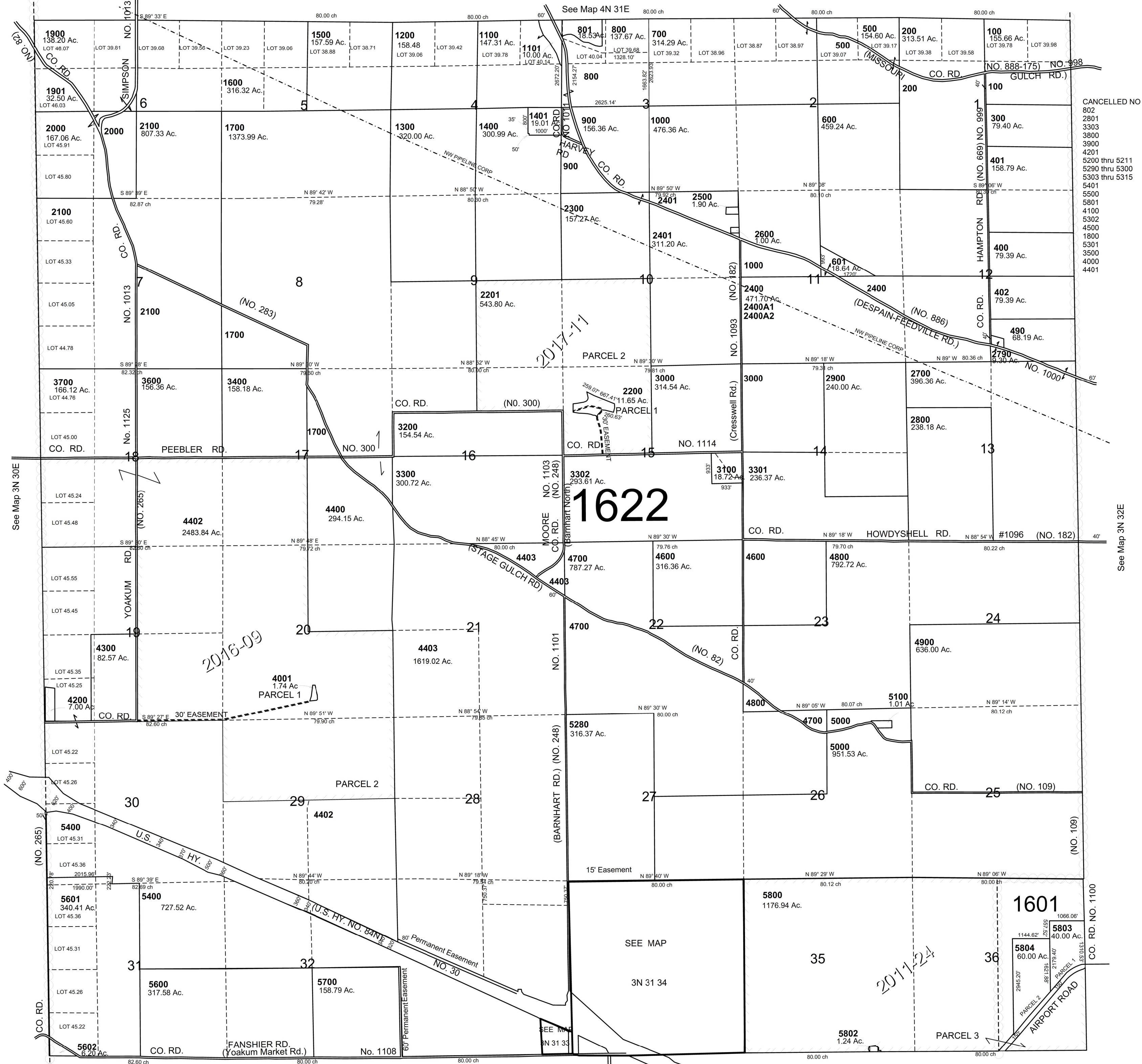
This map was prepared for Assessment & Taxation purposes only and was NOT prepared nor is it suitable for legal, engineering or surveying purposes.

T3N R31E WM UMATILLA COUNTY

3N 31

AERIAL PHOTO NO. 2P 68-70, 72, 121-124, 132-134 & 136

1"=2000'



- CANCELLED NO
- 802
 - 2801
 - 3303
 - 3800
 - 3900
 - 4201
 - 5200 thru 5211
 - 5290 thru 5300
 - 5303 thru 5315
 - 5401
 - 5500
 - 5801
 - 4100
 - 5302
 - 4500
 - 1800
 - 5301
 - 3500
 - 4000
 - 4401

See Map 2N 31

Revised: 09-13-2021

3N 31