

This map was prepared for Assessment & Taxation purposes only and was NOT prepared nor is it suitable for legal, engineering or surveying purposes.

# SW 1/4 NE 1/4 T3N R16E WM UMATILLA COUNTY

## 3N2916AC

SCALE 1"=100'

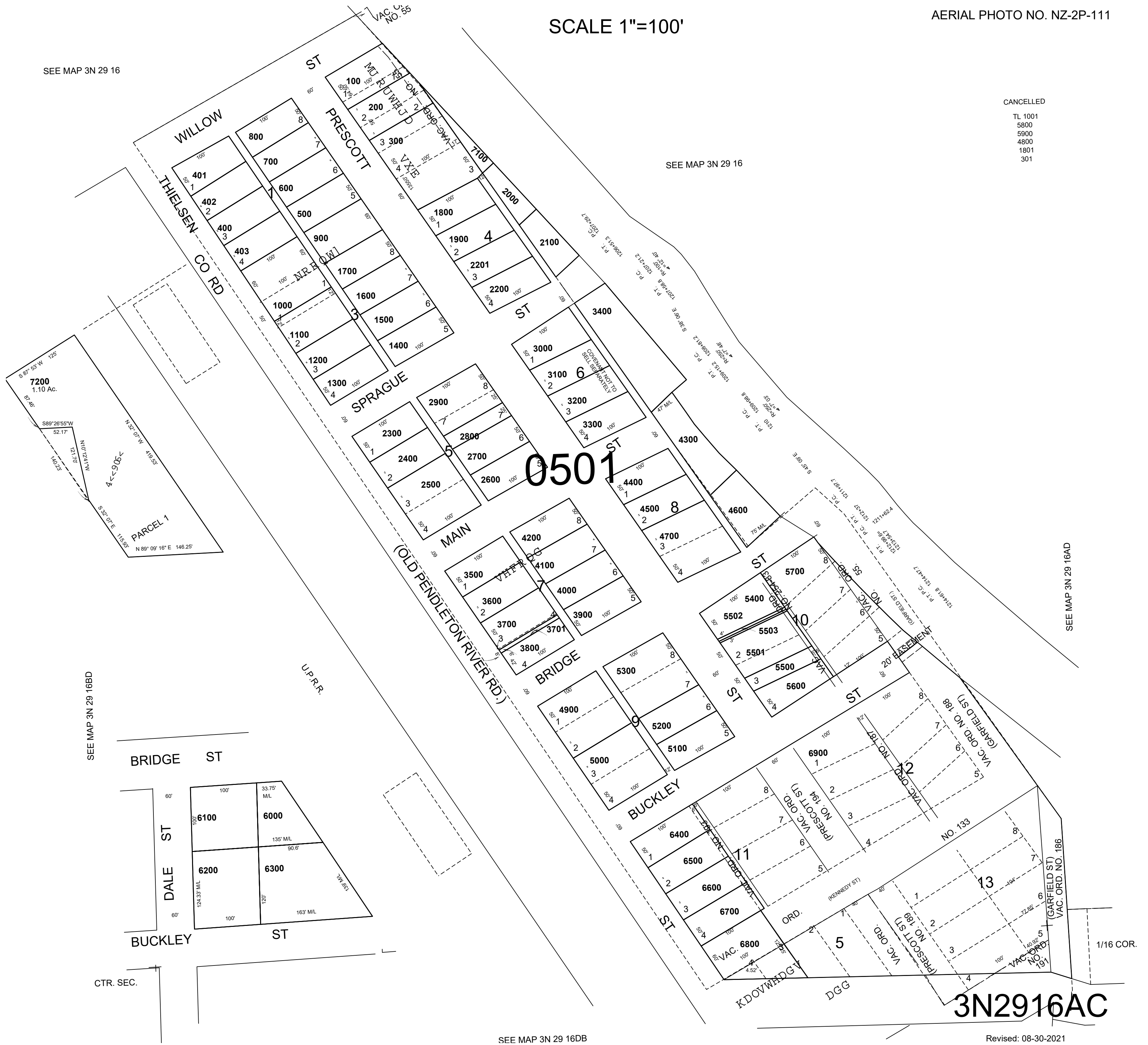
AERIAL PHOTO NO. NZ-2P-111

SEE MAP 3N 29 16

SEE MAP 3N 29 16

CANCELLED

TL 1001  
5800  
5900  
4800  
1801  
301



SEE MAP 3N 29 16DB

Revised: 08-30-2021