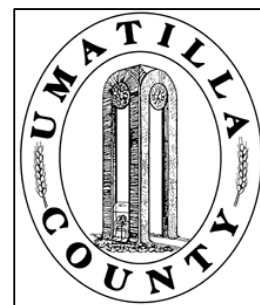


This map was prepared for Assessment & Taxation purposes only and was NOT prepared nor is it suitable for legal, engineering or surveying purposes.



# NE 1/4 SEC 29 T2N R33E WM UMATILLA COUNTY, OR

## 2N3329A

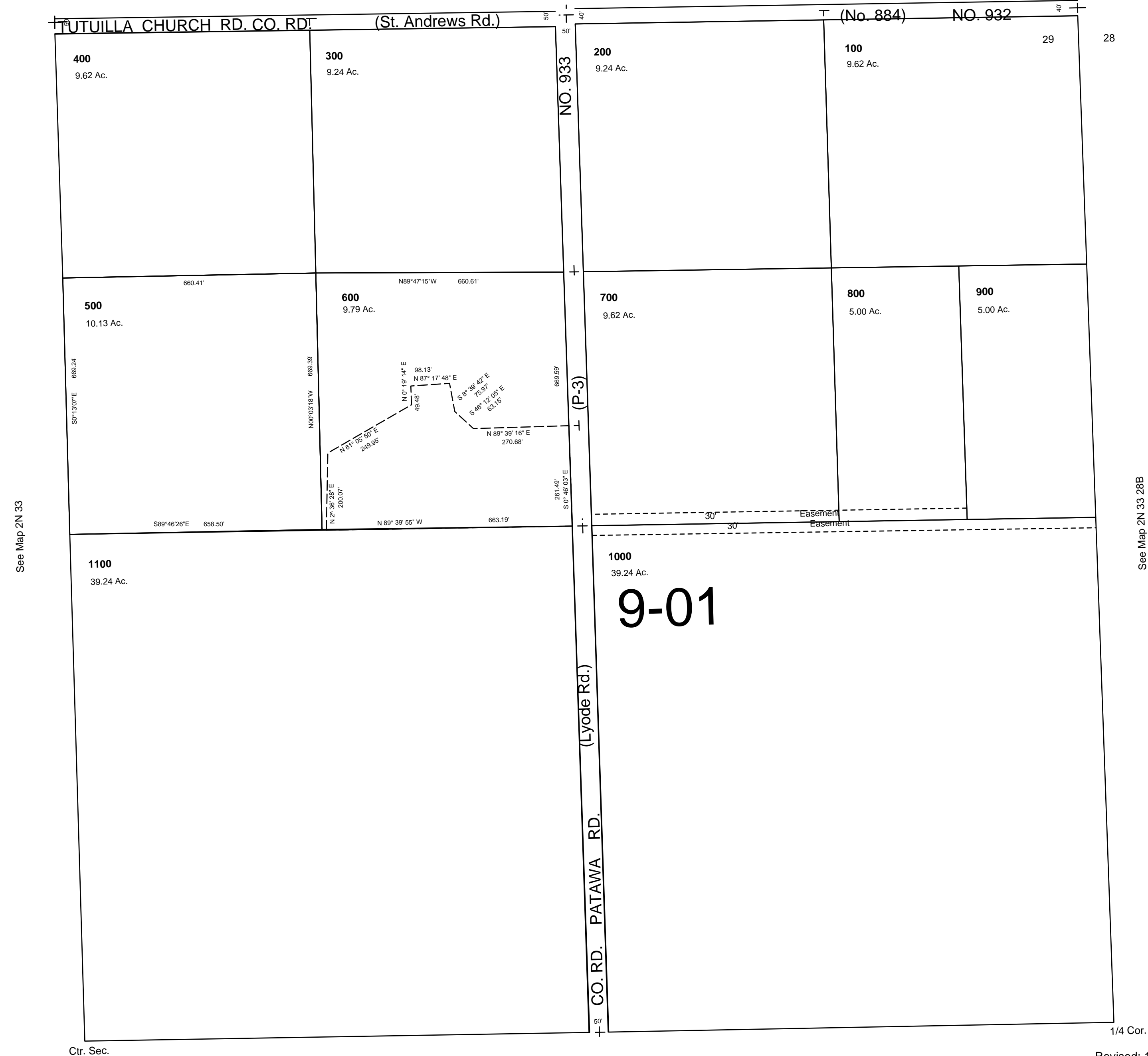
SCALE: 1" = 200'

Aerial Photo No. 4P-46

See Map 2N 33

20 21

1/4 Cor.



See Map 2N 33

See Map 2N 33 28B

See Map 2N 33 29D

Revised: 10-22-09

## 2N3329A