

THIS MAP WAS PREPARED FOR
ASSESSMENT PURPOSES ONLY

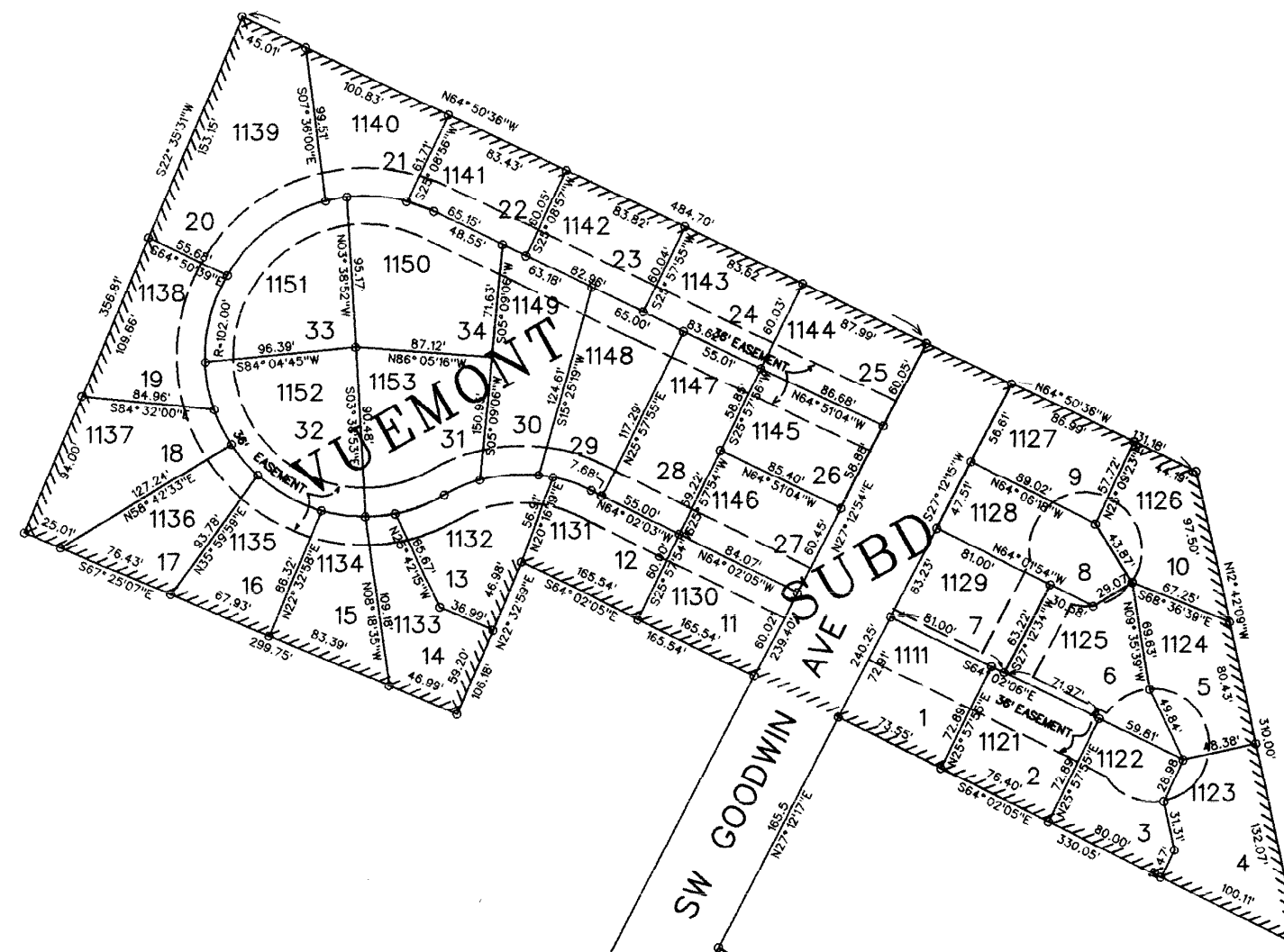
Sec. 9 T2N R32E W.M.
UMATILLA COUNTY

2N 32 09
Detail No. 1

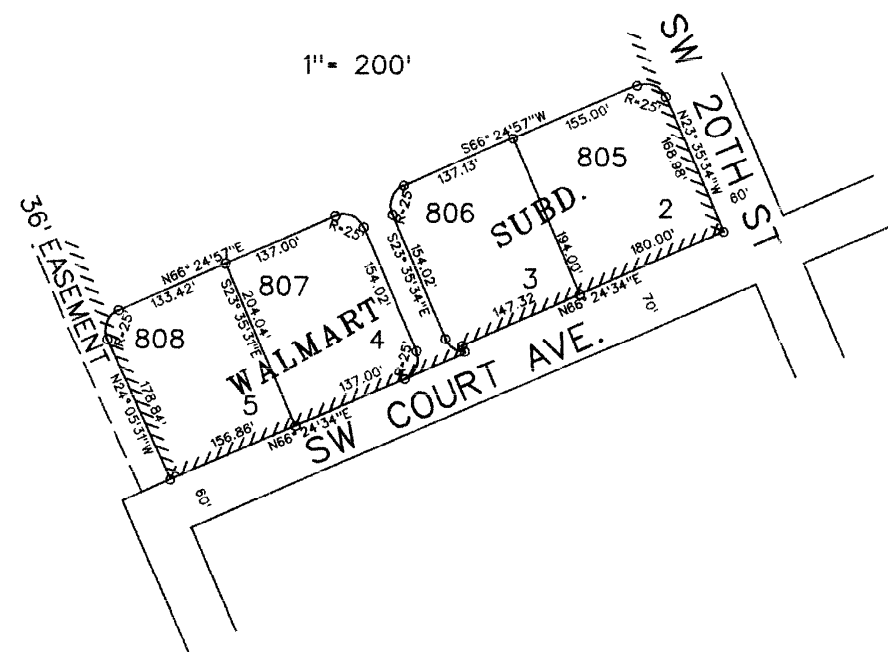
not to scale

Vuemont Subd.

1" = 100'



1" = 200'



8	9
17	16

1335.53'
N89°47'10"W

E 1/16 COR
SEC 9

Detail No. 1
2N 32 09