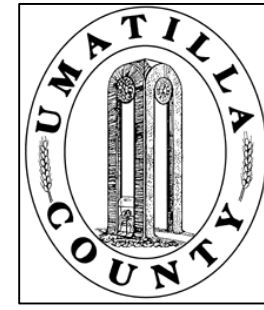


This map was prepared for Assessment & Taxation purposes only and was NOT prepared nor is it suitable for legal, engineering or surveying purposes.

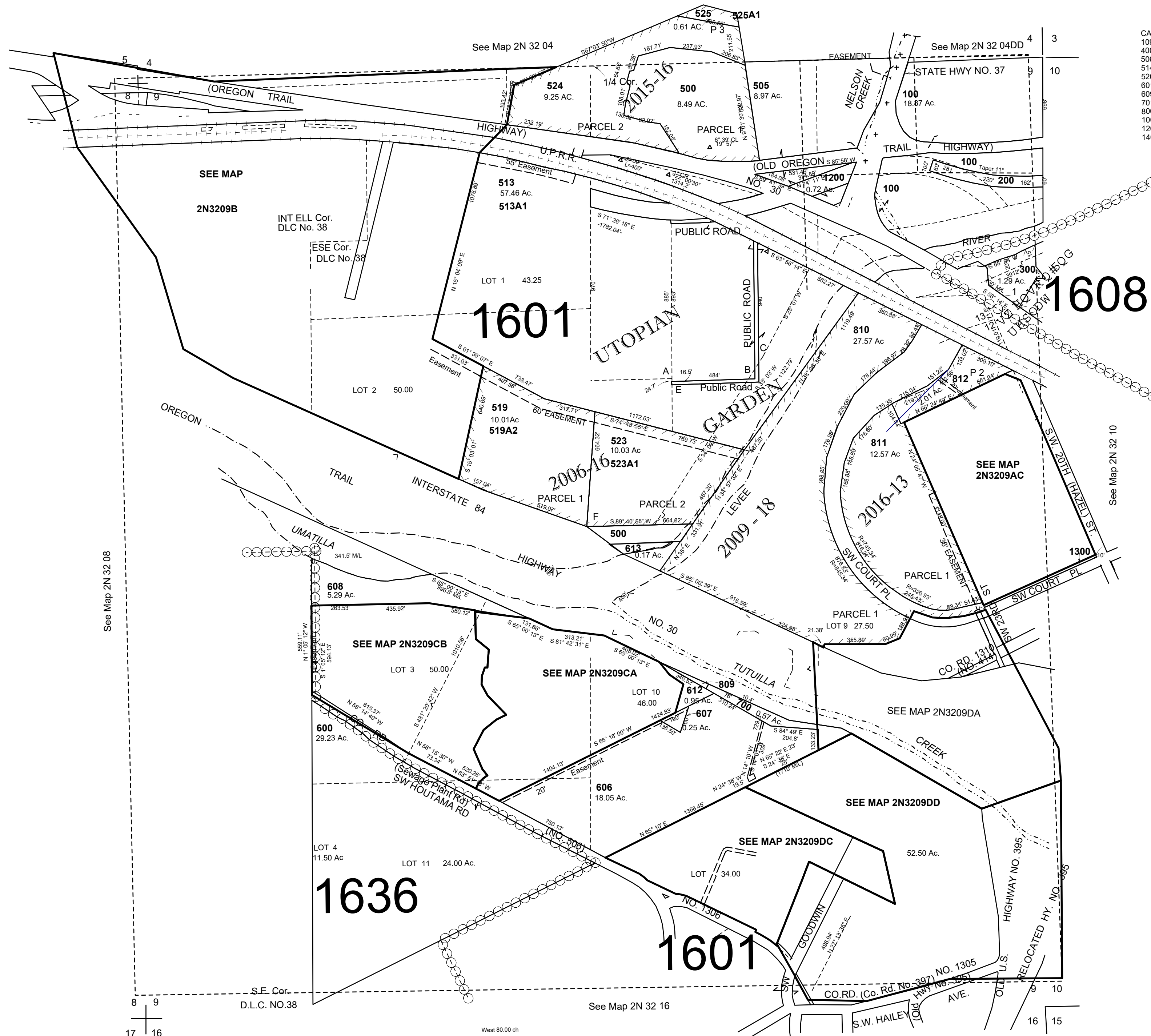


SEC 9 T2N R32E WM UMATILLA COUNTY

SCALE: 1" = 400'

2N3209 & INDEX

Hazel Add
Lots 1-13
Utopian Garden
Aerial Photo No. NZ-4P-104



- CANCELLED NOS
- 109
 - 400 thru 504
 - 506 thru 512
 - 514 thru 518
 - 520 thru 522
 - 601 thru 605
 - 609 thru 611
 - 701 thru 703
 - 800 thru 808
 - 1000 thru 1153
 - 1201
 - 1400 thru 1523

See Map 2N 32 08

8 9
17 16

See Map 2N 32 16

See Map 2N 32 10

West 80.00 ch

Revised: 09-28-2021

2N3209