

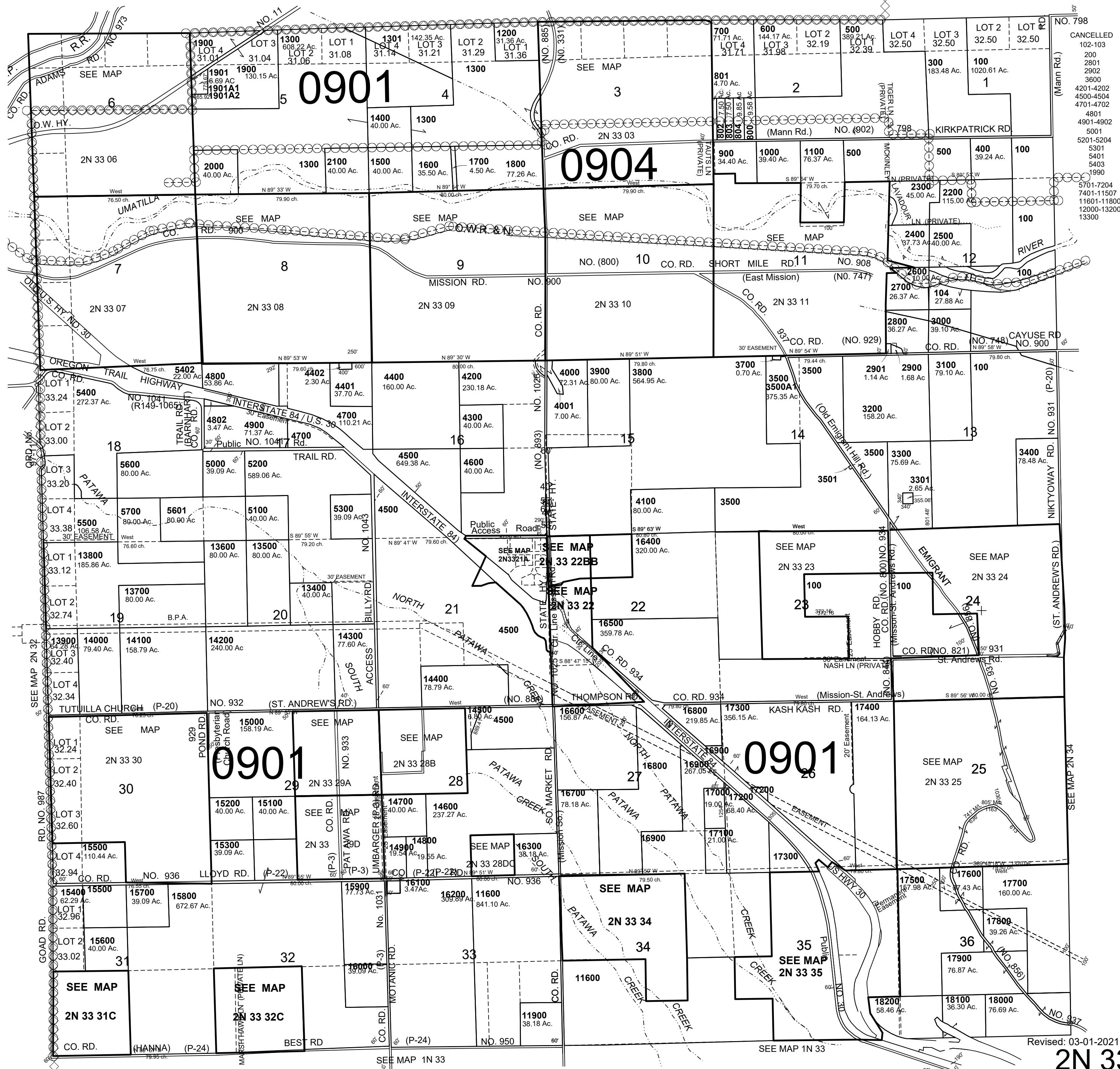
This map was prepared for Assessment & Taxation purposes only and was NOT prepared nor is it suitable for legal, engineering or surveying purposes.

T2N R33E WM UMATILLA COUNTY

2N 33

SCALE 1"=2000'

AERIAL PHOTO NO. NZ-4P 43-47, 62-66 & 97-100



Revised: 03-01-2021

2N 33