

This map was prepared for Assessment & Taxation purposes only and was NOT prepared nor is it suitable for legal, engineering or surveying purposes.

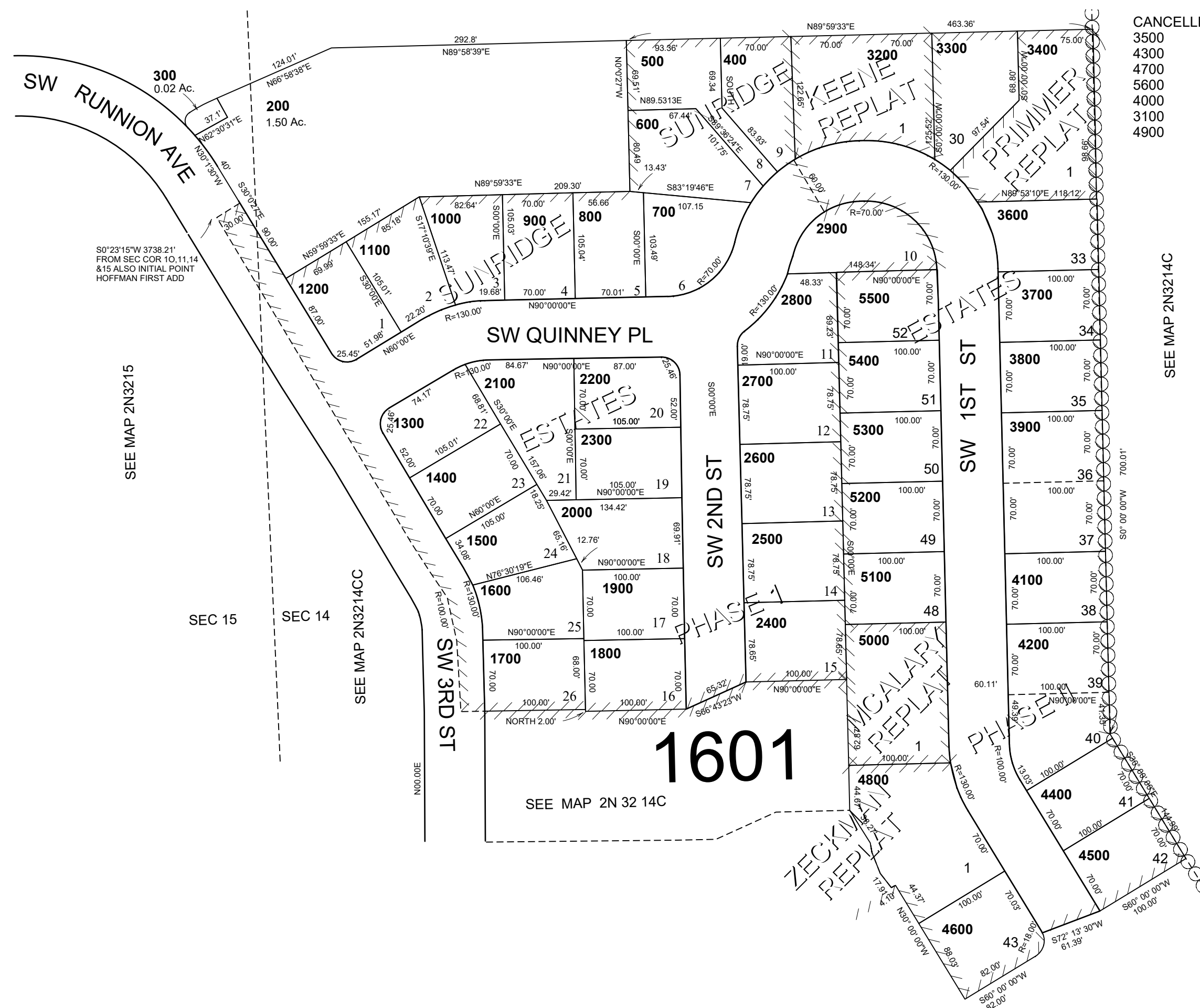
NW1/4 SW1/4 SEC 14 T2N R32E WM UMATILLA COUNTY

SCALE 1"=100'

2N3214CB

AERIAL PHOTO NO 4P-60

KEENE REPLAT
PRIMMER REPLAT
SUNRIDGE ESTATES PH 1
SUNRIDGE ESTATES PH 2
MCALARY REPLAT
ZECKMAN REPLAT



CANCELLED NC
3500
4300
4700
5600
4000
3100
4900

SEE MAP 2N3214C

SEE MAP 2N 32 14C

Revised: 06-29-18L

2N3214CB