

This map was prepared for Assessment & Taxation purposes only and was NOT prepared nor is it suitable for legal, engineering or surveying purposes.

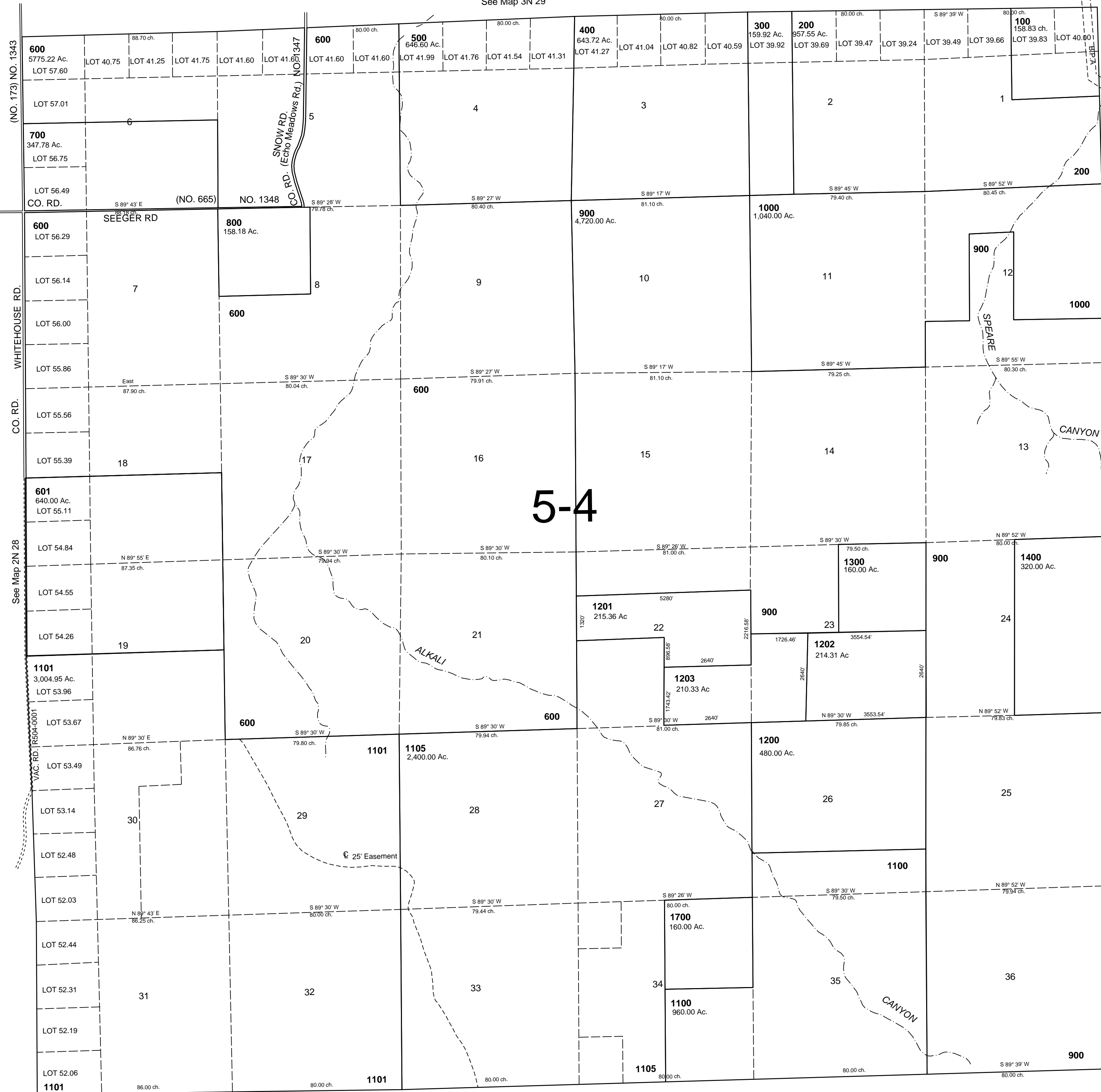
T2N R29E WM UMATILLA COUNTY

2N 29

AERIAL PHOTO NO. 2P-173 & 179, 3P-12, 17, 44, & 50

SCALE: 1" = 2000'

See Map 3N 29



Cancelled No
1500
1600
1102
1103
1104
1106
1107
1000A1

See Map 2N 30

REVISED: 01-26-12

2N 29

See Map 1N 29