

This map was prepared for Assessment & Taxation purposes only and was NOT prepared nor is it suitable for legal, engineering or surveying purposes.

T2N R27E WM UMATILLA COUNTY

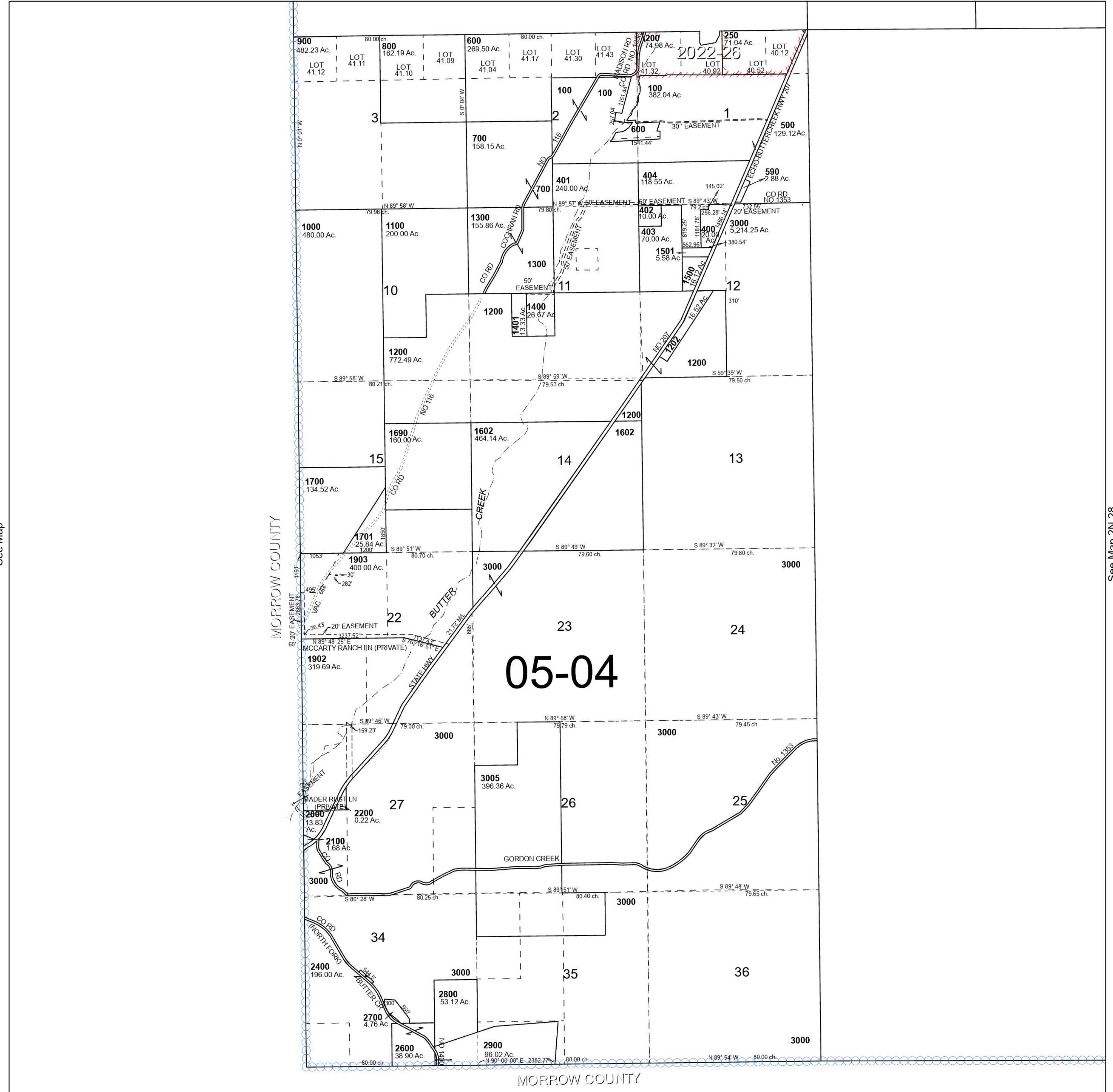
2N 27

Cancelled Tax Lots

300	2101
501	2201
1201	2202
1601	2300
1603-1605	2500
1800	3001-3004
1900	3006
1901	3007
1904-1907	
2001	

SCALE 1" = 2,000'

See Map 3N 27



See Map

See Map 2N 28