

This map was prepared for Assessment & Taxation purposes only and was NOT prepared nor is it suitable for legal, engineering or surveying purposes.

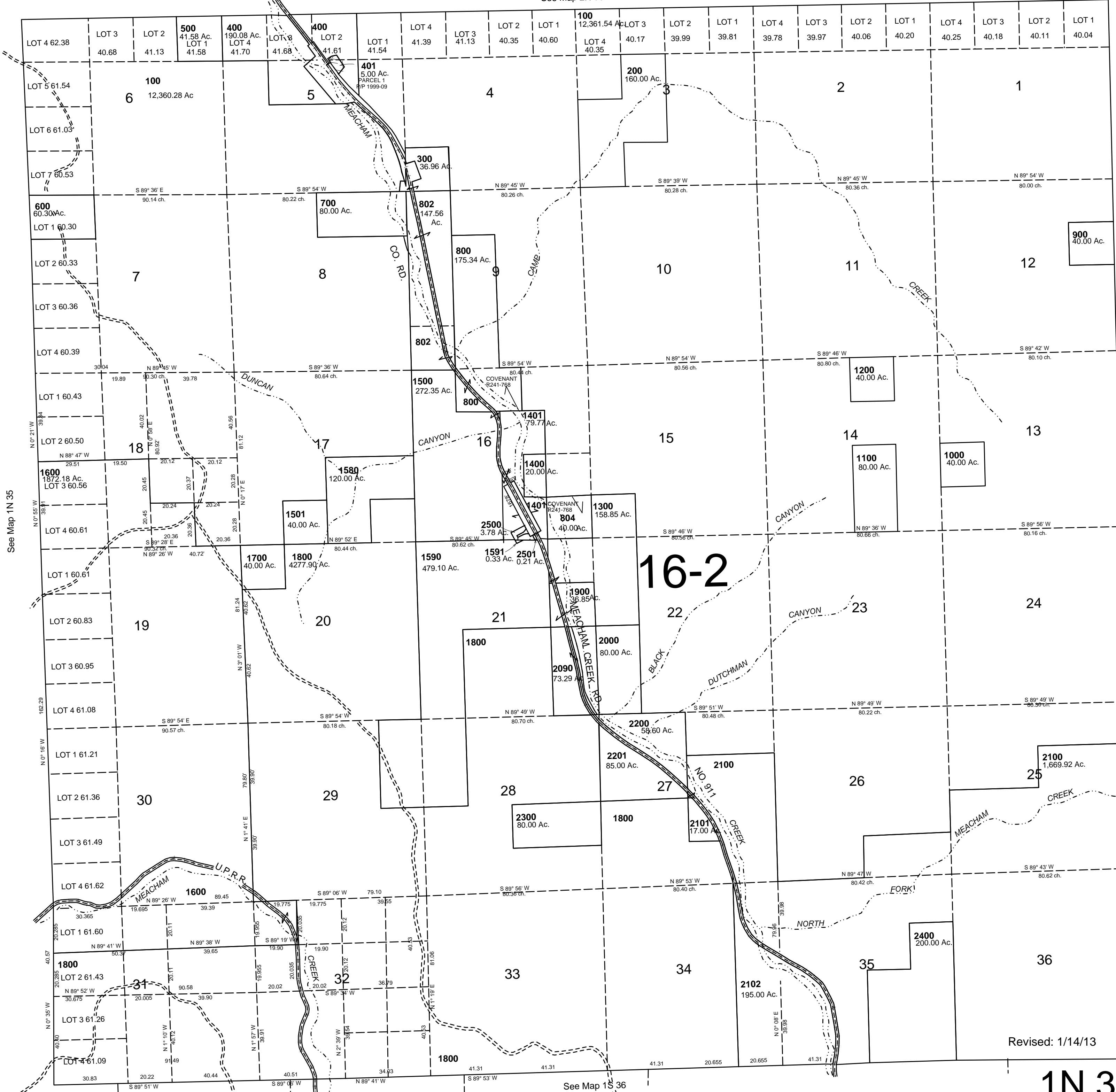
T1N R36E WM UMATILLA COUNTY

1N 36

AERIAL PHOTO NO. 3P-153, 158, 161 & 163

1"=2000'

See Map 2N 36



CANCELLED
TL 801
805
803
101

See Map 1N 35

See Map 1N 37

16-2

Revised: 1/14/13

1N 36

See Map 1S 36