

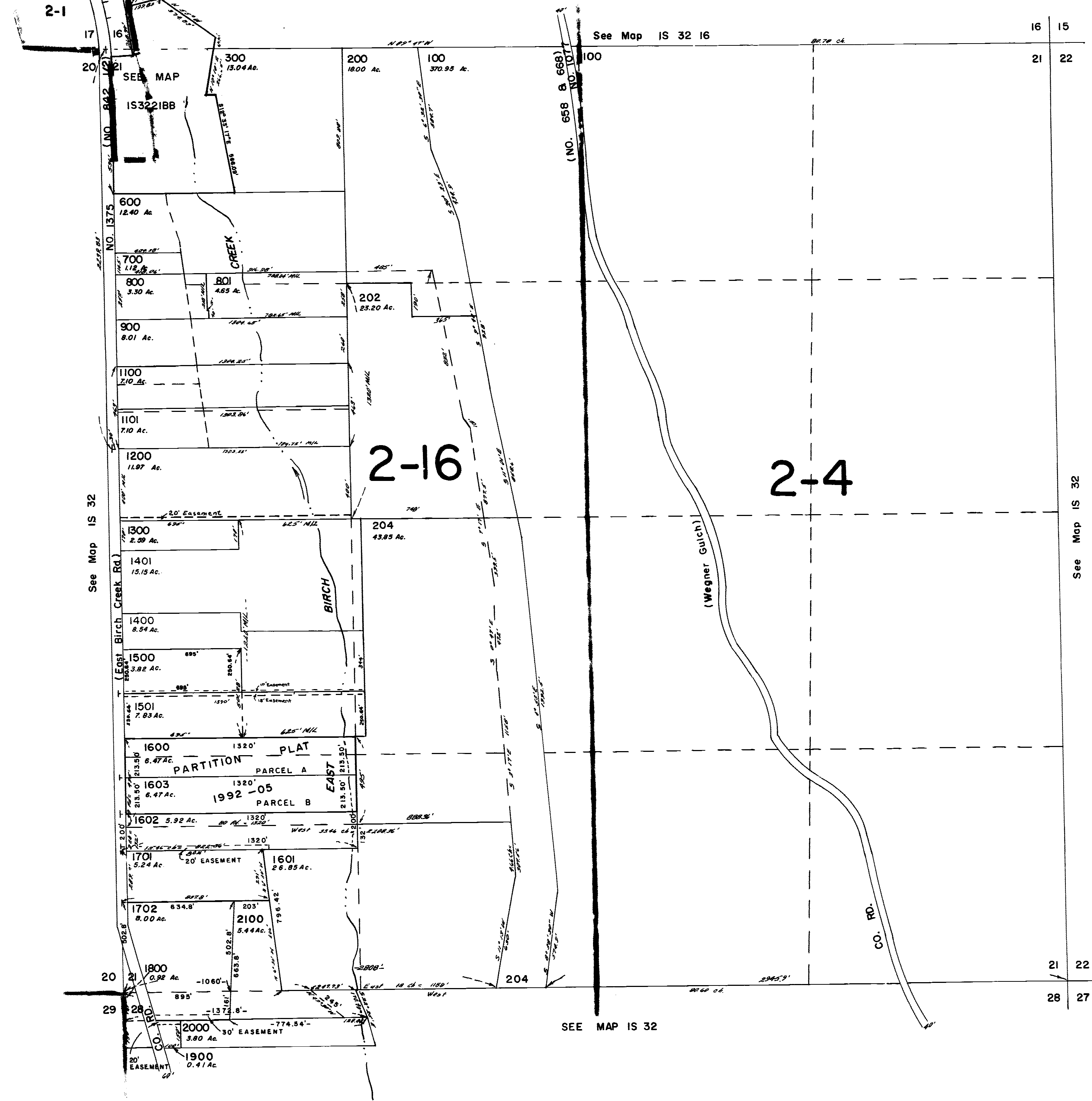
THIS MAP WAS PREPARED FOR ASSESSMENT PURPOSES ONLY

Sec. 21 T.1S. R.32E.W.M.
UMATILLA COUNTY

IS 32 21

1"=400'

Aerial Photo No. NZ-7P-70



CANCELLED
TL 1000
203
201
205
1700
301
400
401
402
500
501
502

IS 32 21